

Hewlett Packard
Enterprise

HPE Networking News

Markus Mayrl | Aruba Channel Manager DACH

Matthias Rohm | Channel SE ACH

Agenda

HPE und Juniper Networks – Update

The larger HPE story

Portfolio Updates

HPE Aruba New Central Update

HPE Networking Instant On Update



Agenda



HPE und Juniper Networks – Update

The larger HPE story

Portfolio Updates

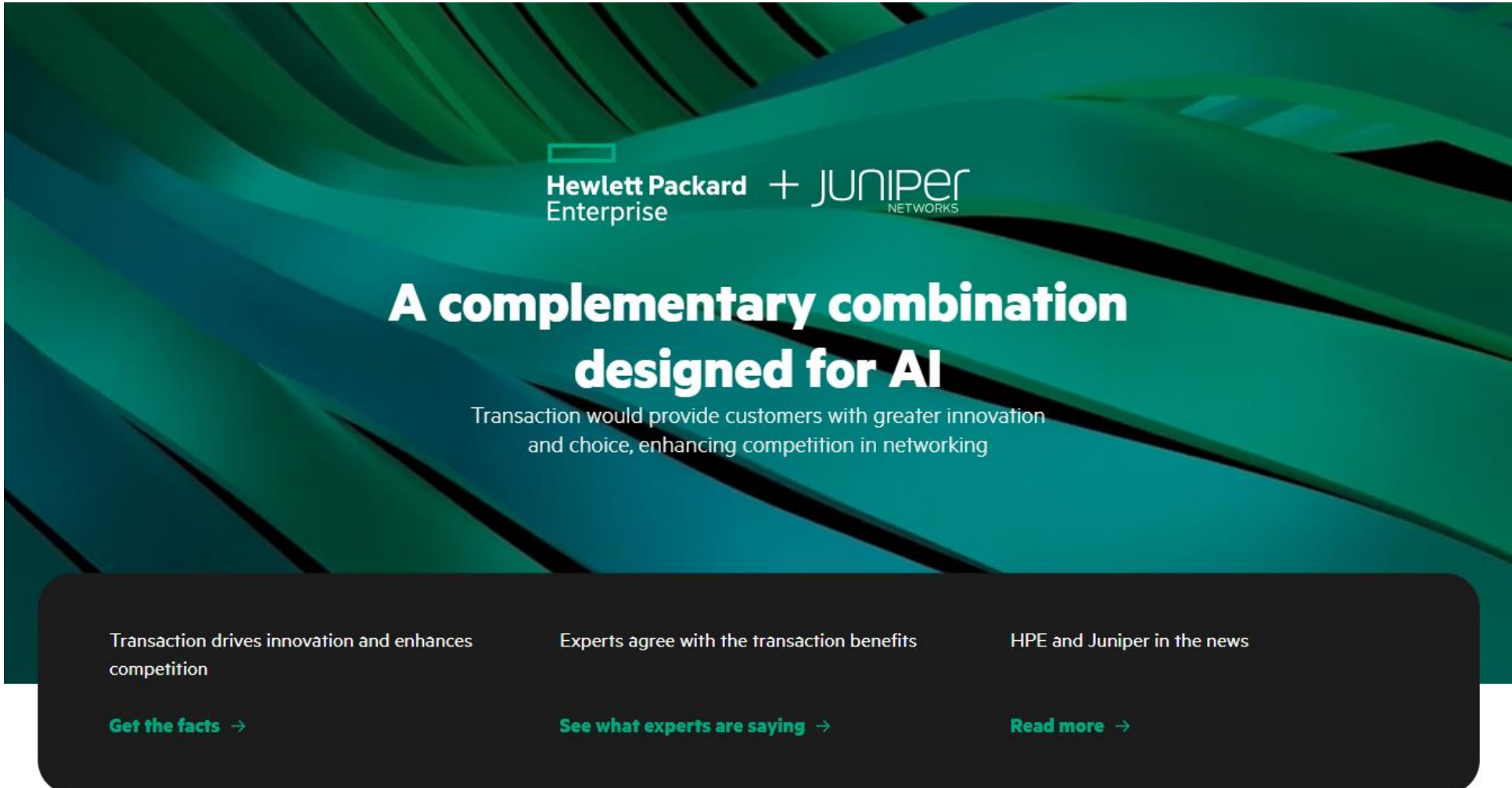
HPE Aruba New Central Update

HPE Networking Instant On Update



HPE und Juniper Networks – ein Update

Landing Page mit aktuellen Informationen: Hewlett Packard Enterprise + Juniper Networks
<https://www.hpeandjunipernetworks.com/>

The graphic features a background of flowing, wavy lines in various shades of green and teal. At the top center, the Hewlett Packard Enterprise logo (a small green rectangle) is followed by the text "Hewlett Packard Enterprise" and a large "+" sign, then the Juniper Networks logo. Below this, the main headline "A complementary combination designed for AI" is written in large, bold, white sans-serif font. Underneath the headline, a smaller line of white text reads: "Transaction would provide customers with greater innovation and choice, enhancing competition in networking". At the bottom, there is a dark grey rounded rectangular area containing three columns of white text, each with a corresponding green arrow pointing right.

Hewlett Packard Enterprise + JUNIPER NETWORKS

A complementary combination designed for AI

Transaction would provide customers with greater innovation and choice, enhancing competition in networking

Transaction drives innovation and enhances competition	Experts agree with the transaction benefits	HPE and Juniper in the news
Get the facts →	See what experts are saying →	Read more →

Agenda



HPE und Juniper Networks – Update

The larger HPE story

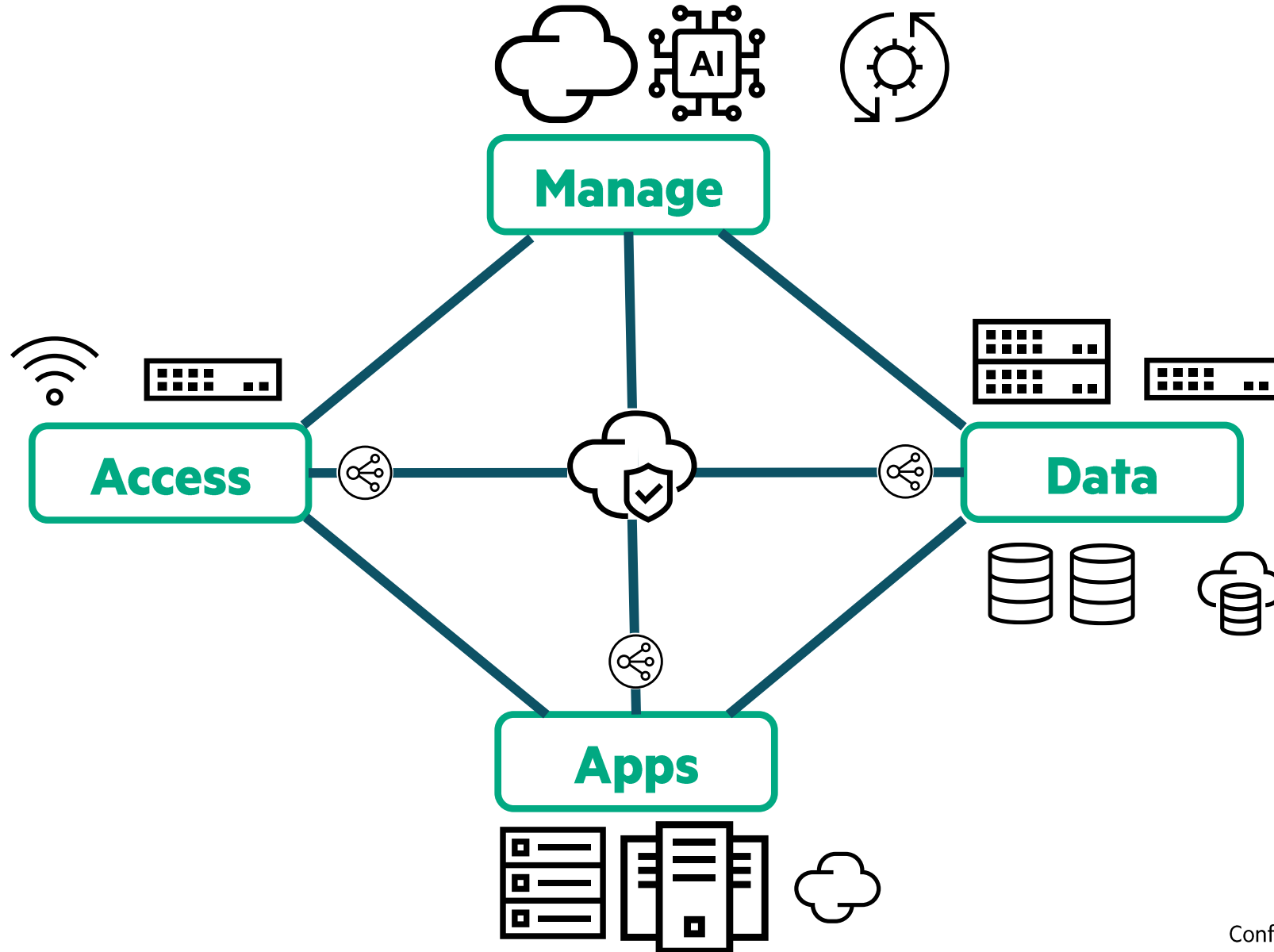
Portfolio Updates

HPE Aruba New Central Update

HPE Networking Instant On Update



What's our story? The bigger picture of the entire IT architecture



Agenda



HPE und Juniper Networks – Update

The larger HPE story

Portfolio Updates

HPE Aruba New Central Update

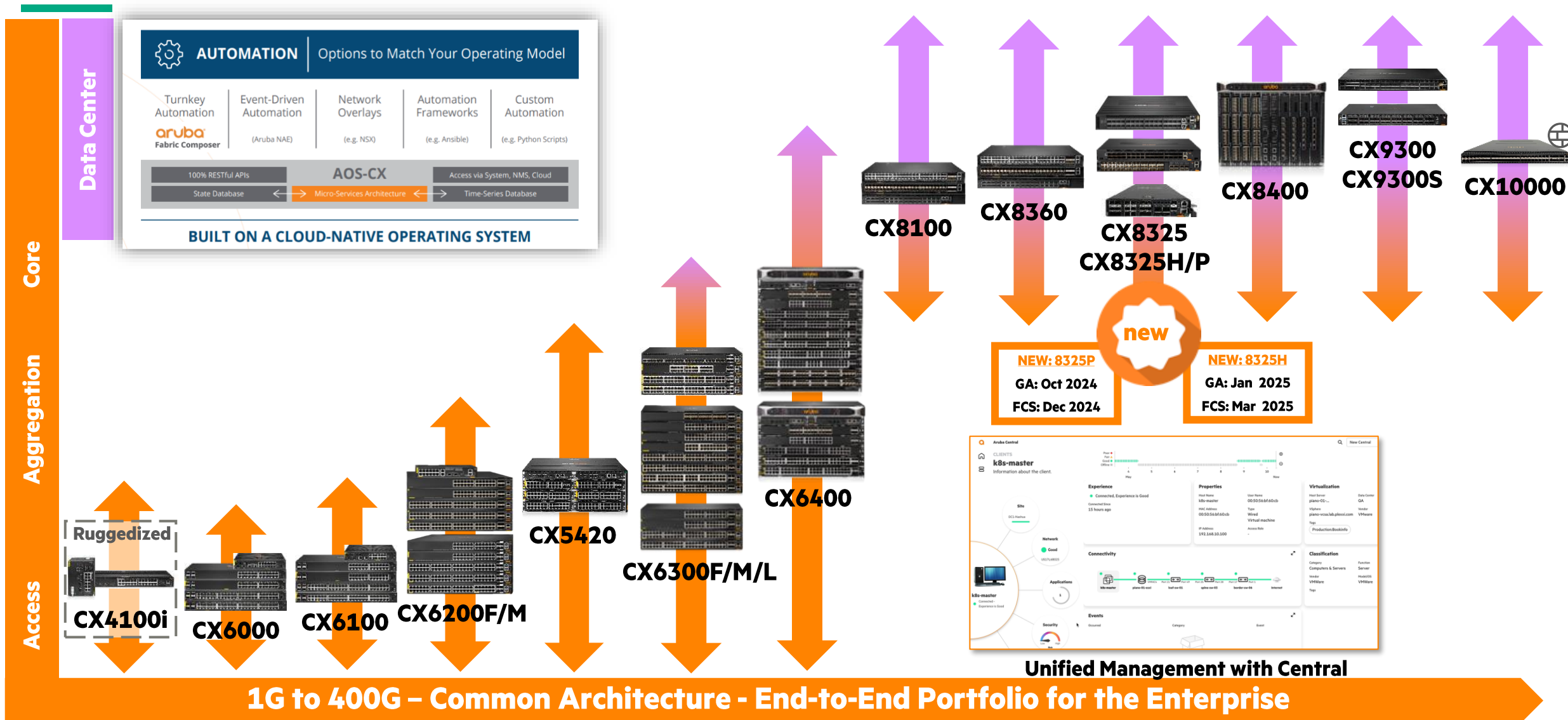
HPE Networking Instant On Update



Switching



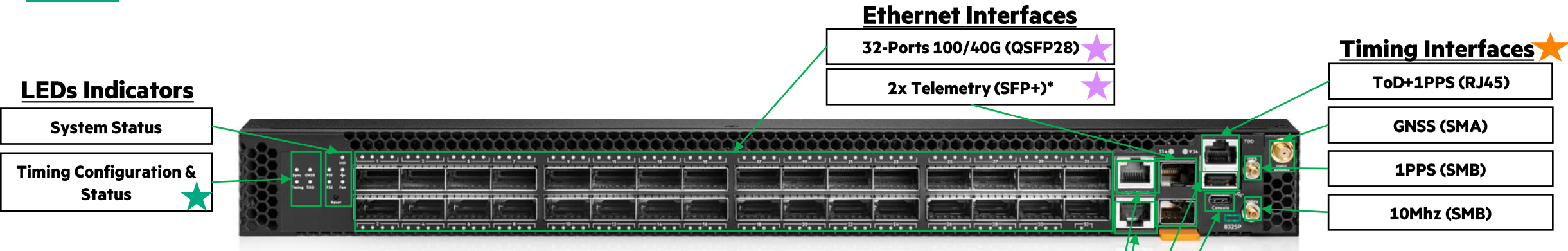
HPE Aruba Networking CX Switch portfolio – Edge to DC



HPE Aruba Networking CX 8325P Switch Series



Aruba 8325P-32C



Convenient bundle (4) to simplify ordering

- Aruba 8325P-32C 32-port 100G QSFP+/QSFP28 **Front-to-Back** 6 Fans and 2 AC **Bundle**
- Aruba 8325P-32C 32-port 100G QSFP+/QSFP28 **Back-to-Front** 6 Fans and 2 AC **Bundle**
- Aruba 8325P-32C 32-port 100G QSFP+/QSFP28 **Front-to-Back** 6 Fans and 2 DC **Bundle**
- Aruba 8325P-32C 32-port 100G QSFP+/QSFP28 **Back-to-Front** 6 Fans and 2 DC **Bundle**

- Management**
- OOBM (1G, RJ45)
 - Console (RJ45)
 - USB-A File Management
 - USB-C Console

6.4Tbps switching capacity	1U form factor for convenient deployment	Several management options including USB-C LED Indicators for System & Timing Status/Config	VSX for High Availability	High hardware scale, including key data center and DCBx features	Time of Day Interface GNSS for Antenna Input 1 Pulse Per Second In/Out 10Mhz In/Out
Advanced Layer 3 including OSPF, BGP, VXLAN and many AOS-CX features	NEBS Compliant, N+1 hot swappable Power Supplies (AC or DC) & Fan Trays (F2B or B2F)	High Speed Interfaces: 32- 100/40G QSFP28 Up to 125- 25G SFP28 Up to 127- 10G SFP+	REST for distributed or centralized orchestration	Database-driven Aruba OS-CX architecture for HA and fault tolerance	HW and SW support for Telco PTP Class C (G.8275.1 and G.8275.2-(T-BC, T-GM*)) and SyncE (G.8262.1)

Telemetry Ports are the same as any other ports and are connected to the ASIC, they can be used as standard ports or used to send Telemetry data , etc across it. Similarly, Telemetry egress is not restricted to these Telemetry Ports, it can be on ANY of the supported ports.

* Not supported in initial 10.15 release

HPE Aruba Networking CX 8325H Switch Series



HPE Aruba Networking CX 8325H Product Details

High performance, High density - First HPE ANW half-width Data Center Switch



18 (25G) and 4 (100G)
1.74 Tb/s Switching Capacity (FDx)
1.28Tb/s Bidirectional ASIC Performance
(1.28 Tb/s in + 1.28 Tb/s out)



16 (100G)
3.24 Tb/s Switching Capacity (FDx)
2Tb/s Bidirectional ASIC Performance
(2 Tb/s in + 2 Tb/s out)

Cost-effective, half-width -
Ethernet network switches for storage, HCI and data center applications

Half-width, single RU form factor, 1/10/25/40/100G connectivity.
Allows full HW redundancy in 1RU.

Enables low-latency and “lossless” networking QoS and connectivity characteristics that storage requires.

Ideal for Ethernet Storage Fabric, SDS and Hyperconverged infrastructure

Ideal for smaller, edge or colocation data centers that require “right-sized” port density or have limited rack space.

Advanced Layer 2/3 including EVPN-VXLAN*, BGP, OSPF, Multicast

Support for Cut-Through OR Store and Forward switching (with no need to reboot)

Two additional 1/10G SFP+ ports which can be used for additional functionality like telemetry

Can be used in small campus and branch locations where space is at a premium

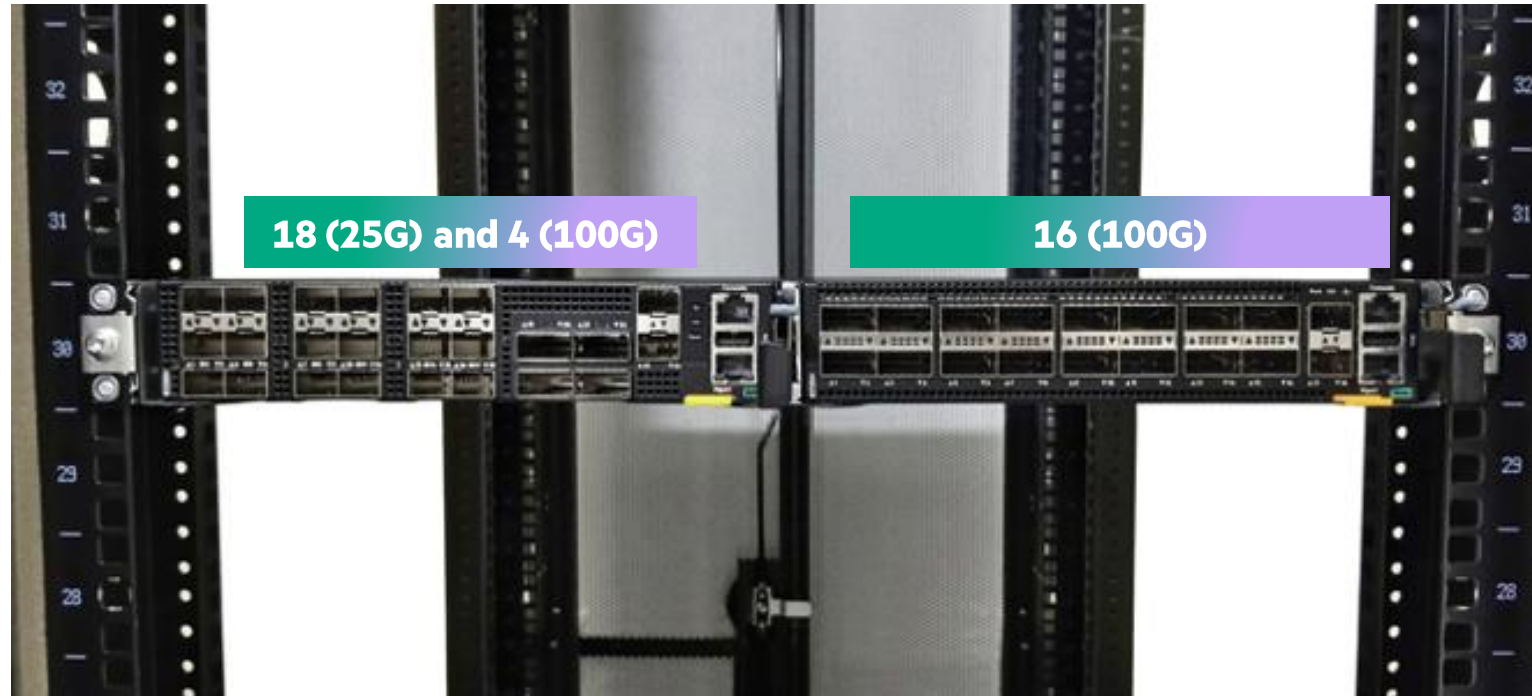
Fixed redundant power (1+1) and cooling with four fixed fans (N+1)

Designed to use lower power consumption, producing less heat and allowing reduced OPEX cost.

32 GB RAM, 120 GB SSD, 32 MB packet buffer, AMD x86 8 Core CPU

HPE Aruba Networking CX 8325H Switch Series

Allows full HW redundancy in 1RU – Both SKUs placed side-by-side



HPE Aruba Networking CX 10000



Distributed Services Switch Eine neue Switching-Kategorie

HPE Aruba Networking CX 10000

AMD
PENSANDO



Stateful Firewall Services



Firewall



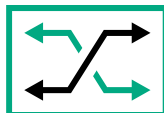
DDoS



Telemetry



Encrypt



NAT



SLB

Volle Netzwerkfunktionalität plus 800G-Firewall-Leistung

Eine Stateful Firewall hinter jedem Switch-Port mit integriertem Telemetrie-Streaming

Eliminiert/reduziert den Bedarf an Security Appliances und Host-Software und bietet 10-fache Leistung bei 1/3 TCO

Use Cases:

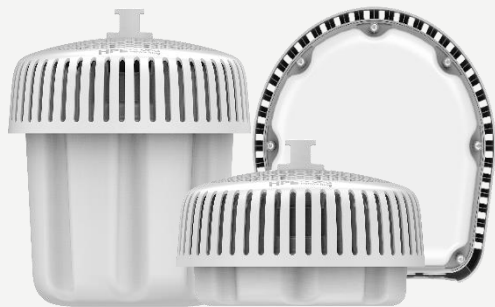
- **VM-Ware NSX Alternative**
- **Datacenter Applikations-Visibilität**
- **Mikrosegmentierung im DC**
- **IPSEC Datacenter Interconnect**
- **Collapsed Core für den Mittelstand**

Wireless



Wi-Fi 6, Wi-Fi 6E, and Wi-Fi 7 APs for indoor, outdoor & remote use

Wi-Fi 6E Outdoor & Hazardous



670 and 670EX Series

Wi-Fi 6 Outdoor & Hazardous Loc.



518 Series



560 Series



570 Series



560EX Series



570EX Series



580/580EX Series

Wi-Fi 6E Indoor



610 Series



630 Series



650 Series

Wi-Fi 6 Indoor



500 Series



510 Series



530 Series



550 Series

Hospitality



600H Series

Remote



600R Series

Wi-Fi 7 Indoor



730 Series



750 Series

Hospitality



500H Series

Remote



500R Series

7XX Series Access Points

Mid-Range: 730 Series (AP-735/734)

- **Tri-band 2x2 Flex Radio**

- Options for dual 5 Ghz (5/5/6) or Dual 6 Ghz (5/6/6)
- Peak combined 14.4 Gbps (Dual-6 GHz mode)
- Typical combined 4.7 Gbps (20/80/160, tri-band mode)

- **Dual 5 Gbps Ethernet Ports (PoE failover)**

- Class 5 802.3bt or 802.3at w/IPM support



Flagship: 750 Series (AP-755/754)

- **Tri-band 4x4 Flex Radio**

- Options for dual 5 Ghz (5/5/6) or Dual 6 Ghz (5/6/6)
- Peak combined 28.8 Gbps (Dual-6 GHz mode)
- Typical combined 9.4 Gbps (20/80/160, tri-band mode)

- **Dual 10 Gbps Ethernet Ports (PoE sharing)**

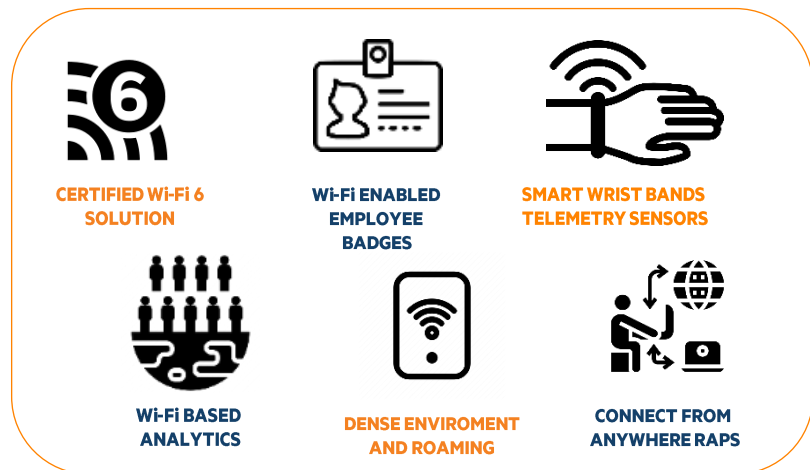
- Class 6 802.3bt or Class 5 802.3bt/802.3at w/IPM support



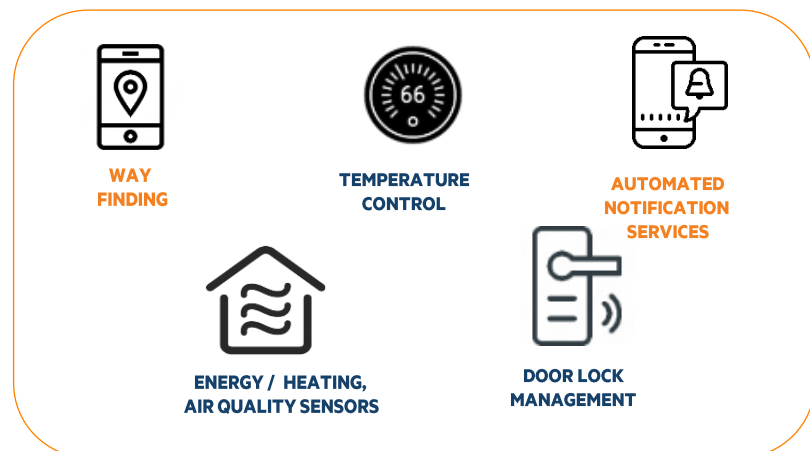
AP als Wireless Access Platform

Reduzieren Overlay-Infrastruktur, um verschieden Konnektivitätsanforderungen zu unterstützen

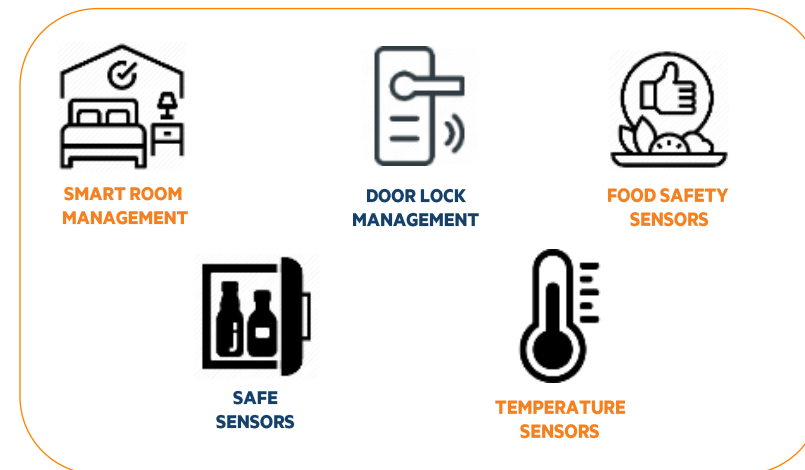
802.11ax (Wi-Fi 6) Radio



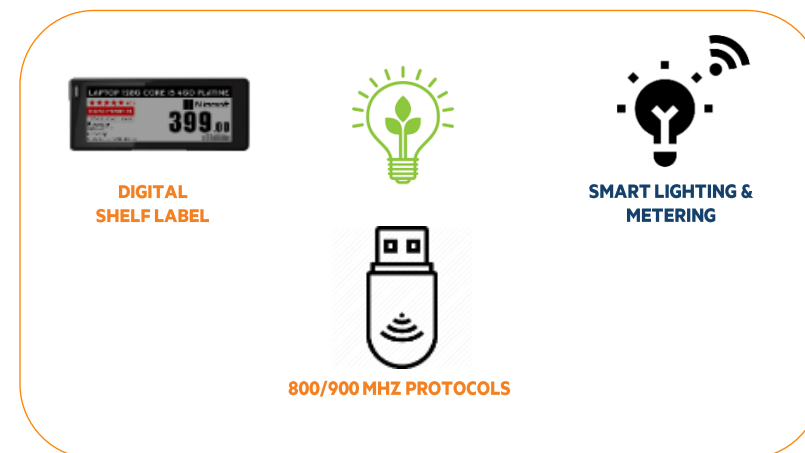
BLE



802.15.4 / Zigbee



USB



- Reduce complexity by replacing overlay IoT infrastructure
- Transport IoT data over Aruba WLAN
- Deliver IT and OT visibility in one central location

HPE Aruba Networking 100 Series Cellular Bridge



AOS 10
BASED



HPE Aruba Networking BR-150

Cloud-managed cellular wireless bridge for internet connectivity

- High-performance 5G cellular speeds for primary, secondary or backup WAN connectivity
- Supports 5G, LTE (4G), and private cellular including CBRS bands.
- Certified by major public cellular providers..
- Cloud-based management and control with new HPE Aruba Networking Central.
- High-speed wired connectivity with 2.5 Gbps Ethernet ports.
- Compact model powered by PoE or DC power.
- Additional environmental protection with optional IP55 Transformation kit (sold separately).

Secure Connectivity - SASE



Secure Access Service Edge: sicherer & performanter Zugriff auf Ressourcen

SASE

HPE Aruba Networking
EdgeConnect SD-WAN

beste Performance, dynamisches Routing & notwendige On-Site Security



HPE Aruba Networking
EdgeConnect SSE

Sicherer Zugriff für User & gleichzeitiger Schutz von Ressourcen - ortsunabhängig

- Advanced, Secure SD-WAN
- Dynamic Routing
- WAN Optimization
- Next Generation Firewall
- IDS/IPS
- DDoS Protection
- Advanced Segmentation

- Zero Trust Network Access
- Cloud Access Security Broker
- Secure Web Gateway
- Remote Browser Isolation
- Data Loss Prevention



Agenda



HPE und Juniper Networks – Update

The larger HPE story

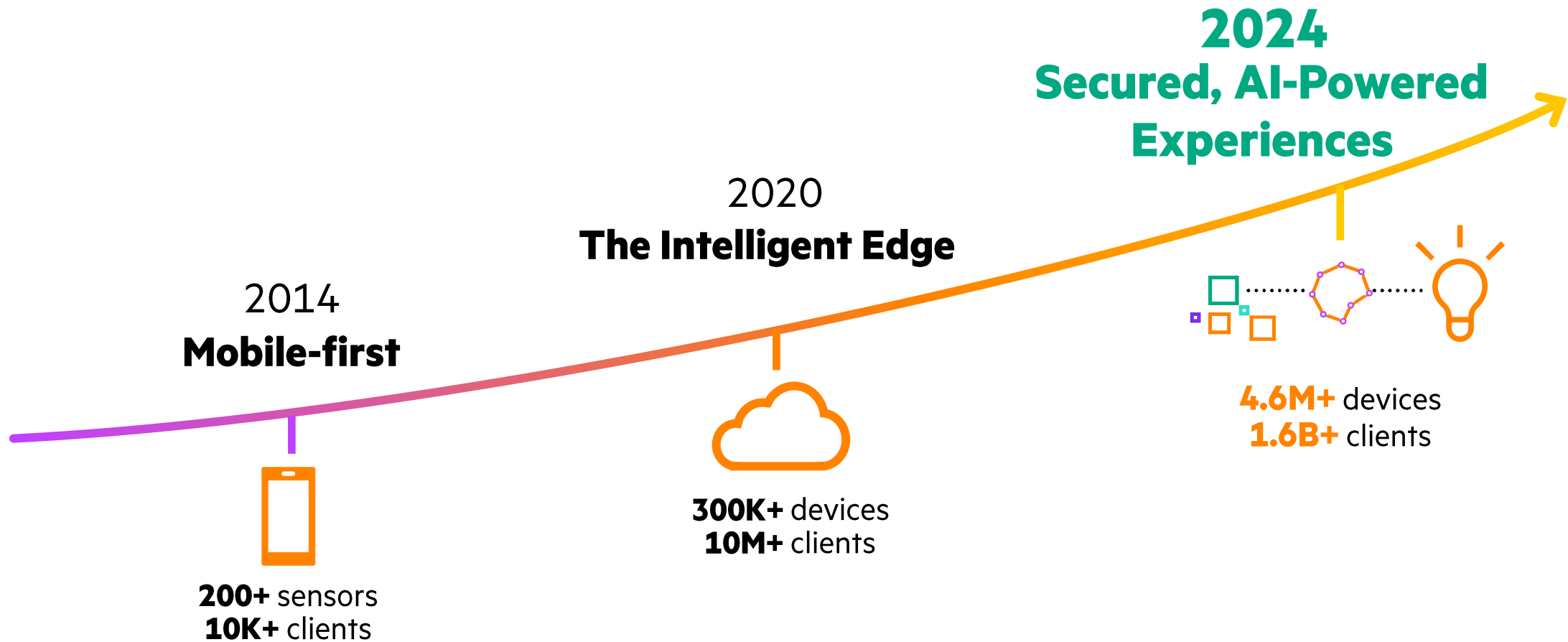
Portfolio Updates

HPE Aruba New Central Update

HPE Networking Instant On Update



Evolution of Central

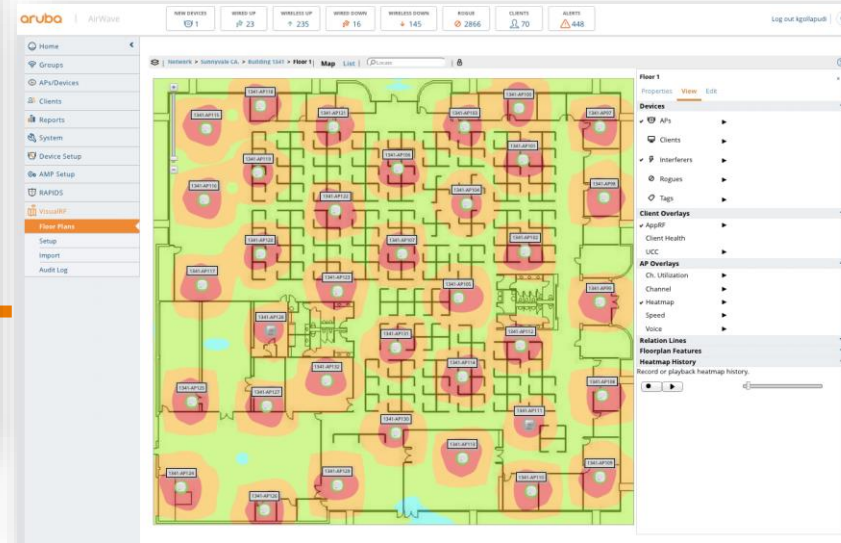
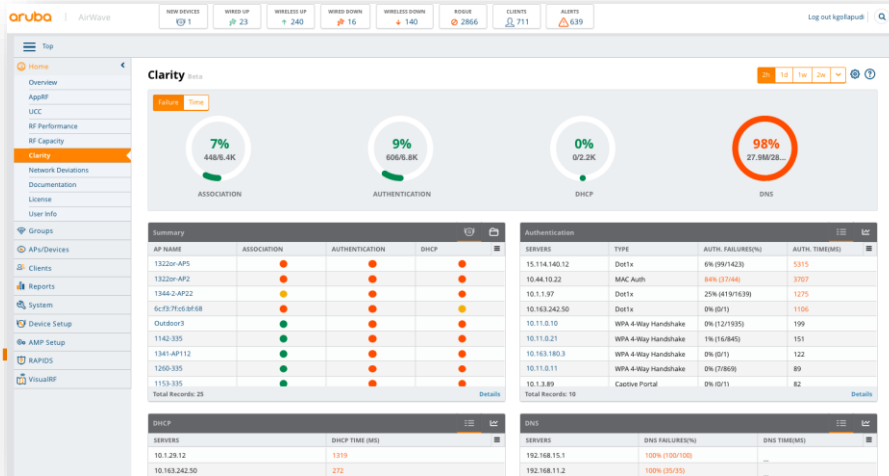


Acquisitions



18X Gartner® Magic Quadrant™ Leader

AirWave & Mobility Conductor Primary Features



Rogue AP Intrusion
Detection Service

MC

AirGroup

MC

ClientMatch

MC

AirMatch

WIRELESS SERVICES

MC

Unified
Communication
and Collaboration

CORE SERVICES

MC

Live Upgrade

Audits

Alerts

MC

Application
Visibility

Floorplan
Manager

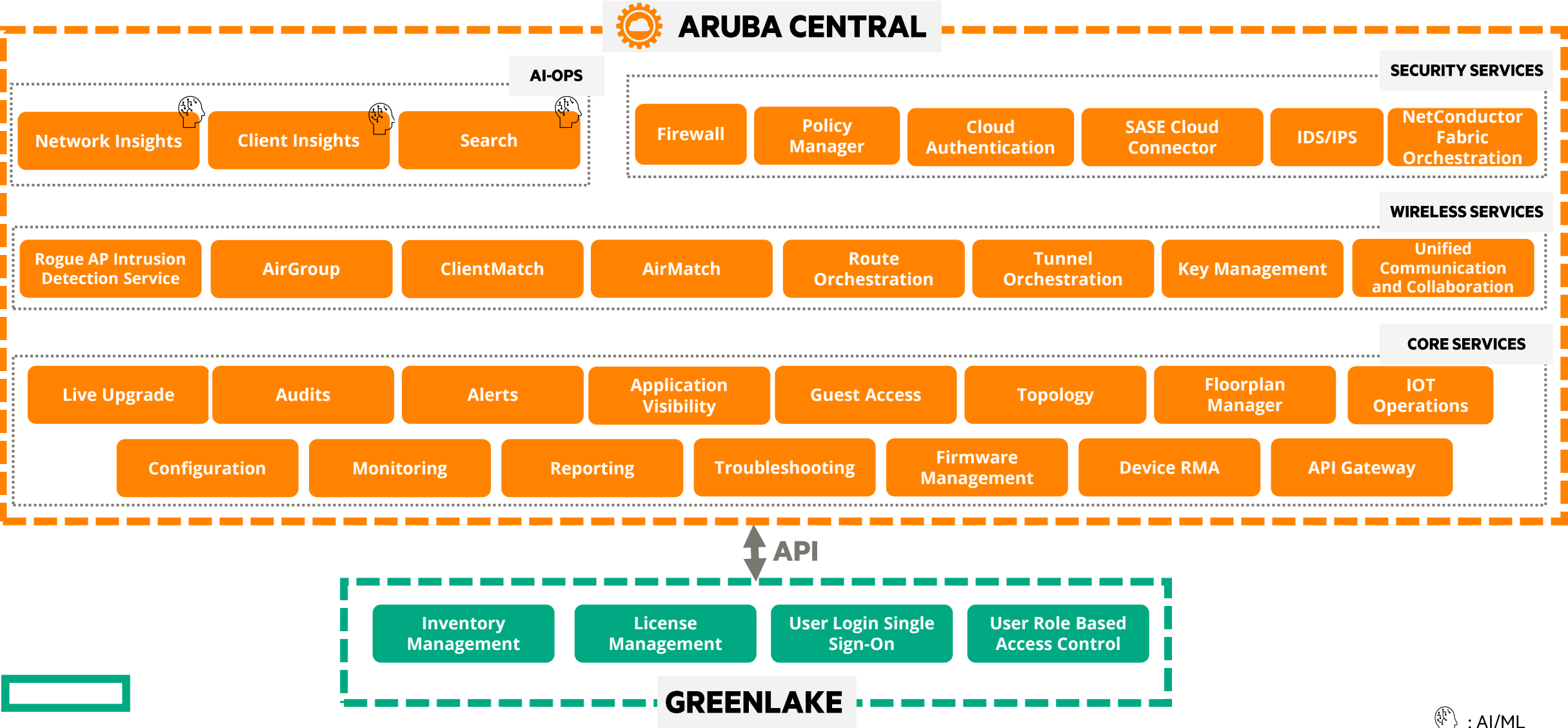
Monitoring

Reporting

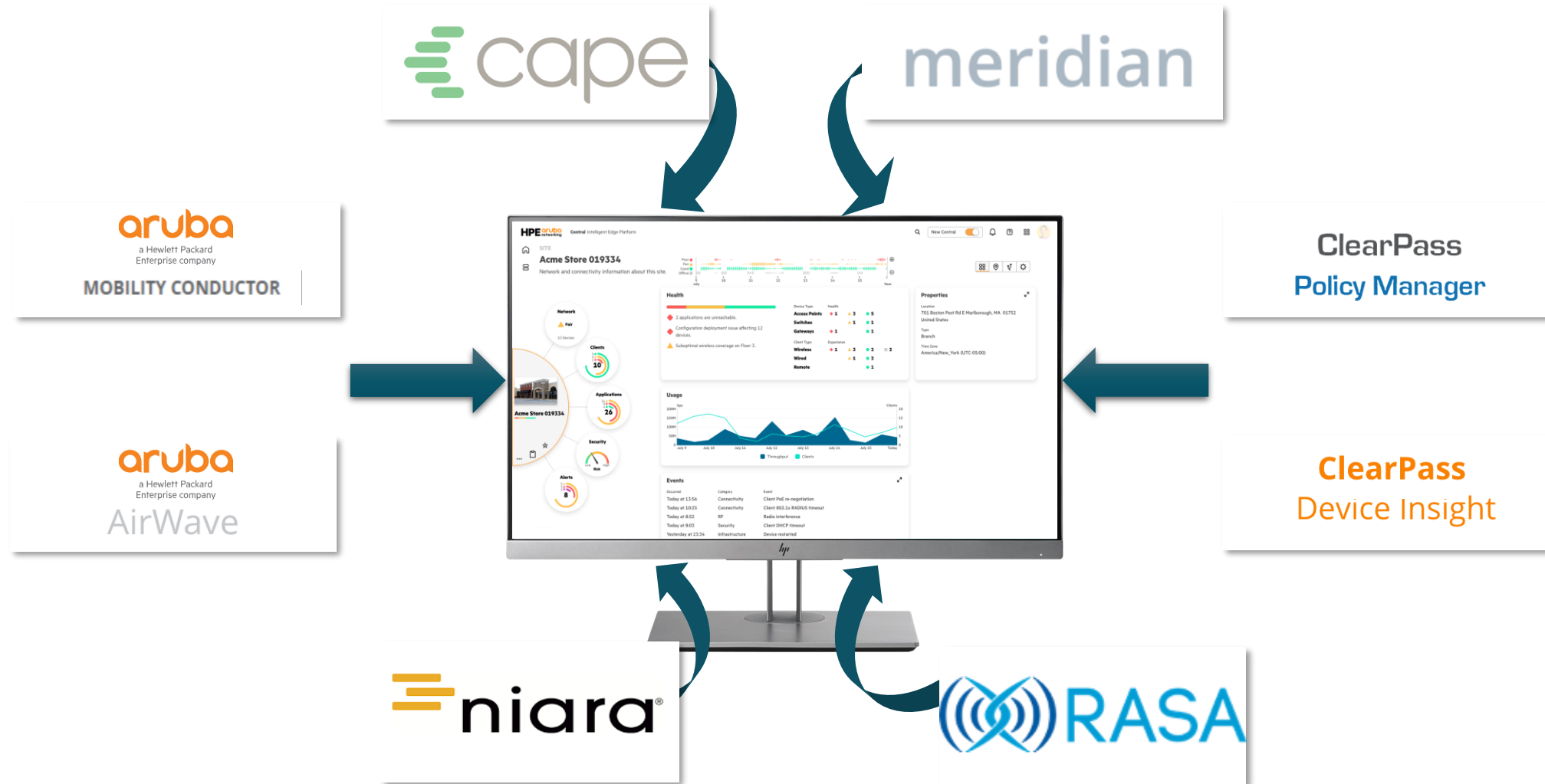
MC

Troubleshooting

HPE GreenLake & Aruba Central applications, delivered and managed in SaaS



New Central: The Best From the Past and the Future

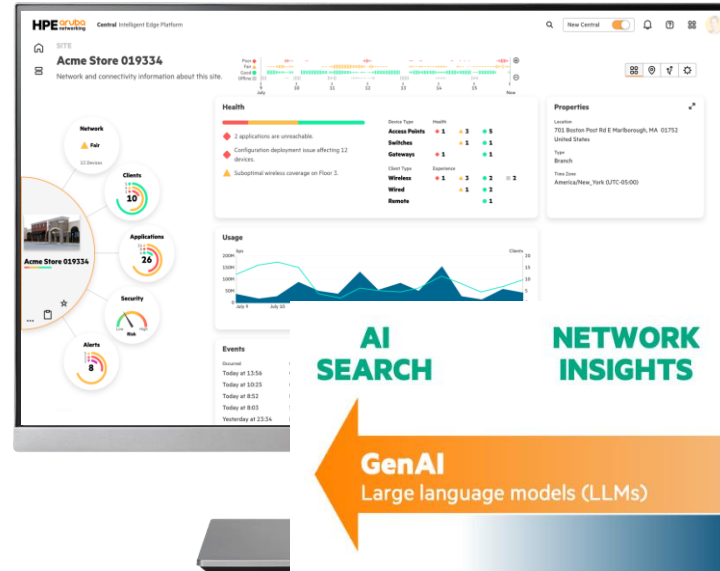


New Central: Learns from the Industry's Largest Data Lake

4.6M+
Devices

1.6B+
Clients

30+
Industry Verticals



**AI
SEARCH**

**NETWORK
INSIGHTS**

**AI
ASSIST**

**CLIENT
INSIGHTS**

**INCIDENT
DETECTION**

GenAI
Large language models (LLMs)

Classification AI
Clustering, correlation, regressions...



Introducing the next generation of Central

Future-ready. AI-powered. Operator-centric

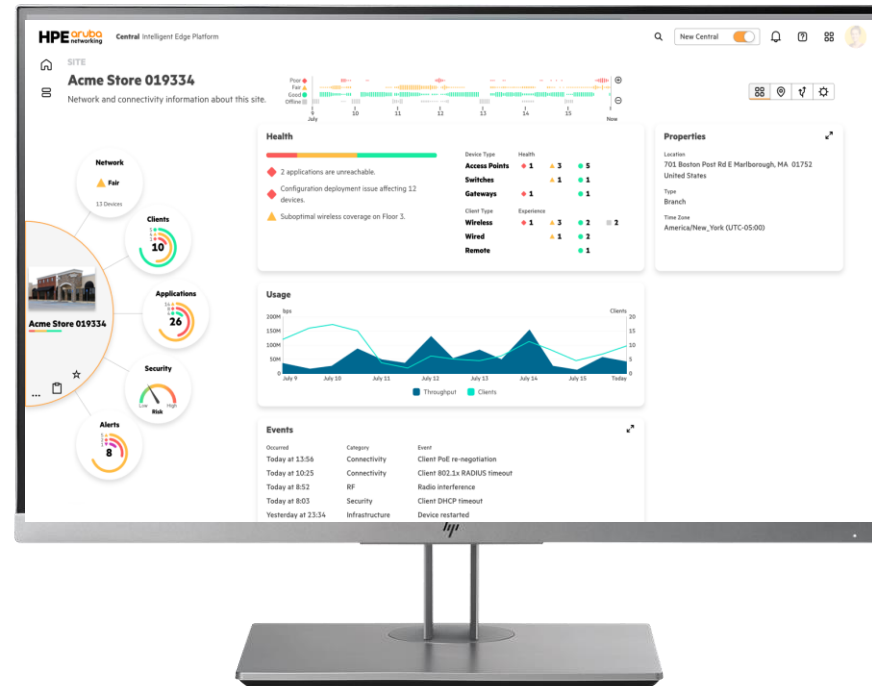


Maximize IT efficiency

Contextual representation of data based on **user-intent**, minimizing manual correlation

Operational simplicity

Software-defined, intent-based and **device agnostic** configuration workflows



Reduced MTTR

Powerful troubleshooting tools, and AI-driven pragmatic assistance for **faster root cause analysis**

Enhanced programmability

API-first model for interoperability and automation

DEMO TIME



Agenda



HPE und Juniper Networks – Update

The larger HPE story

Portfolio Updates

HPE Aruba New Central Update

HPE Networking Instant On Update



HPE Networking Instant On end-to-end networking solution



Single pane of glass

Common user experience for Instant On switches and Access Points



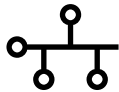
Common workflows

Automatic configuration of VLANs across APs and switches



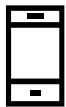
Managed firmware updates

Automatic distribution/ installation of maintenance software for bug fixes / security enhancements



Topology view

Intuitive map of all Instant On devices deployed in a network



Remote management

Remote monitoring and management of your network



SG1004



SG2505P



1830



1930



1960



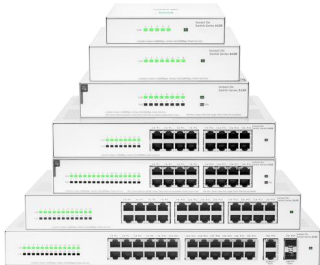
Wi-Fi 6 access points



Transceivers and DACs

Unmanaged switches

No configuration or management required for the smallest networks



1430



HPE Networking Instant On Secure Gateways



HPE Networking Instant On Secure Gateways

Key features

Firewall

- Protect against security breaches and limit the origin & destination of the traffic reaching & leaving your network.

IDS/IPS

- Inspect flows and prevent malicious traffic beyond the address or domain flows originate from.

Encryption

- Securely VPN connects workplaces over un-trusted domains.
- Regulatory compliance and sensitive data transmission.

WAN Resiliency

- Uninterrupted internet and cloud business access

- Automated multi-ISP WAN resiliency failover



Instant On end-to-end cloud management

Instant On Secure Gateways

- Crypto future-proofness from TPM 2.0
- Up to 2.5Gbps hardware accelerated connectivity throughput per SMB site - no downgraded network performance
- Business resiliency from multiple WAN links and ISPs
- Instant On cloud management portal famous Ease-of-Use expanded to end-to-end zero-trust network security

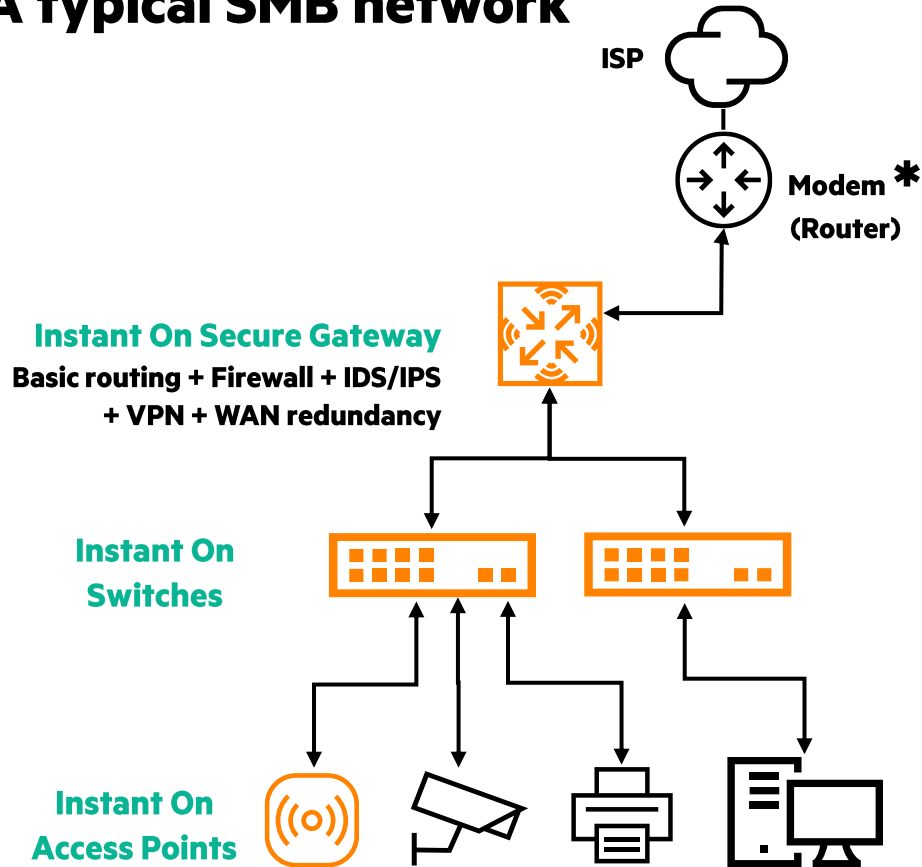
* Some features highlighted will be introduced through future software updates.



Model details	 SG1004 (SOG33A)	 SG2505P (SOG34A)
	SOG33A HPE Networking Instant On Secure Gateway 4-port Gigabit SG1004	SOG34A HPE Networking Instant On Secure Gateway 5-Port SmartRate 2.5G PoE+ 64W SG2505P
Description		
WAN Ports	1 x 1GbE	1 x 2.5GbE
Configurable WAN/LAN Ports	1 x 1GbE	1 x 2.5GbE + 1 x 1GbE
LAN Ports	2 x 1GbE	2 x 1GbE
PoE	N/A	4x CL4 PoE with 64W budget
Hardware accelerated performance	<ul style="list-style-type: none">• 980Mbps (IDS/IPS + firewall)• 930Mbps (VPN + IDS/IPS + firewall)	<ul style="list-style-type: none">• 2.4Gbps (IDS/IPS + firewall)• 2.3Gbps (VPN + IDS/IPS + firewall)
Resiliency	Load balancing & WAN failover	
Security & routing	Basic Routing & Firewall	
	Site-to-Site and Client VPN*	
	Up to 100 connections	Up to 500 connections
Management	IDS/IPS	
	Cloud management only	
Warranty / Support	2-year default warranty – 3-year optional service contracts	

The HPE Networking Instant On Secure Networking Solution

A typical SMB network



Instant On Benefits



All in one network security, from workplace perimeter to network access control and cloud access security



Single vendor single seat management for end-to-end secure network



Intent networking from End-to-end security policies from Instant On cloud platform



The full devices capabilities at **no additional cost as always**



Two gateway models for SMB customers scale, performance, and pricing requirements



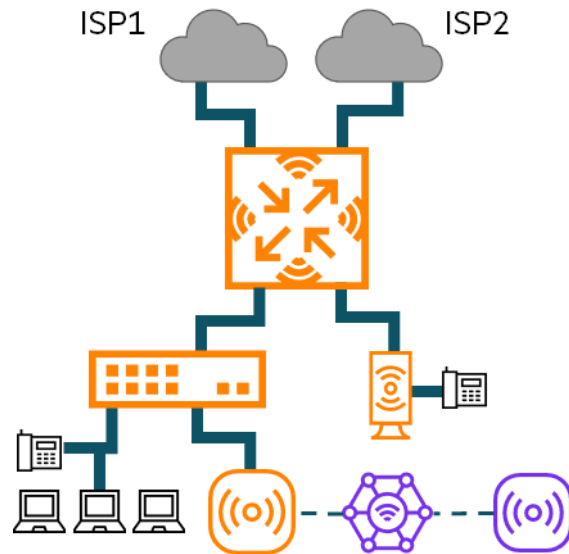
Competitive TCO with robust feature set and rich roadmap

* Optional - Modem will be needed for conversion of cable/fiber to ethernet and could be skipped for deployments that have ISP connectivity with Ethernet

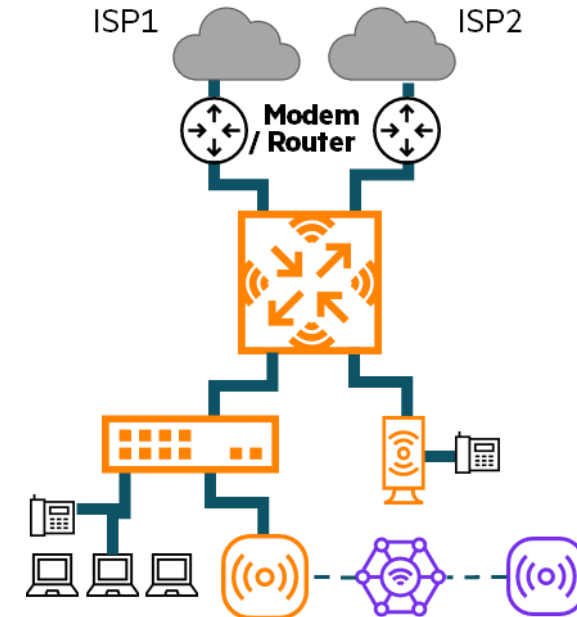
Some features highlighted will be introduced through future software updates.

Deployment Scenario

One gateway per site



Each SMB network infrastructure needs security

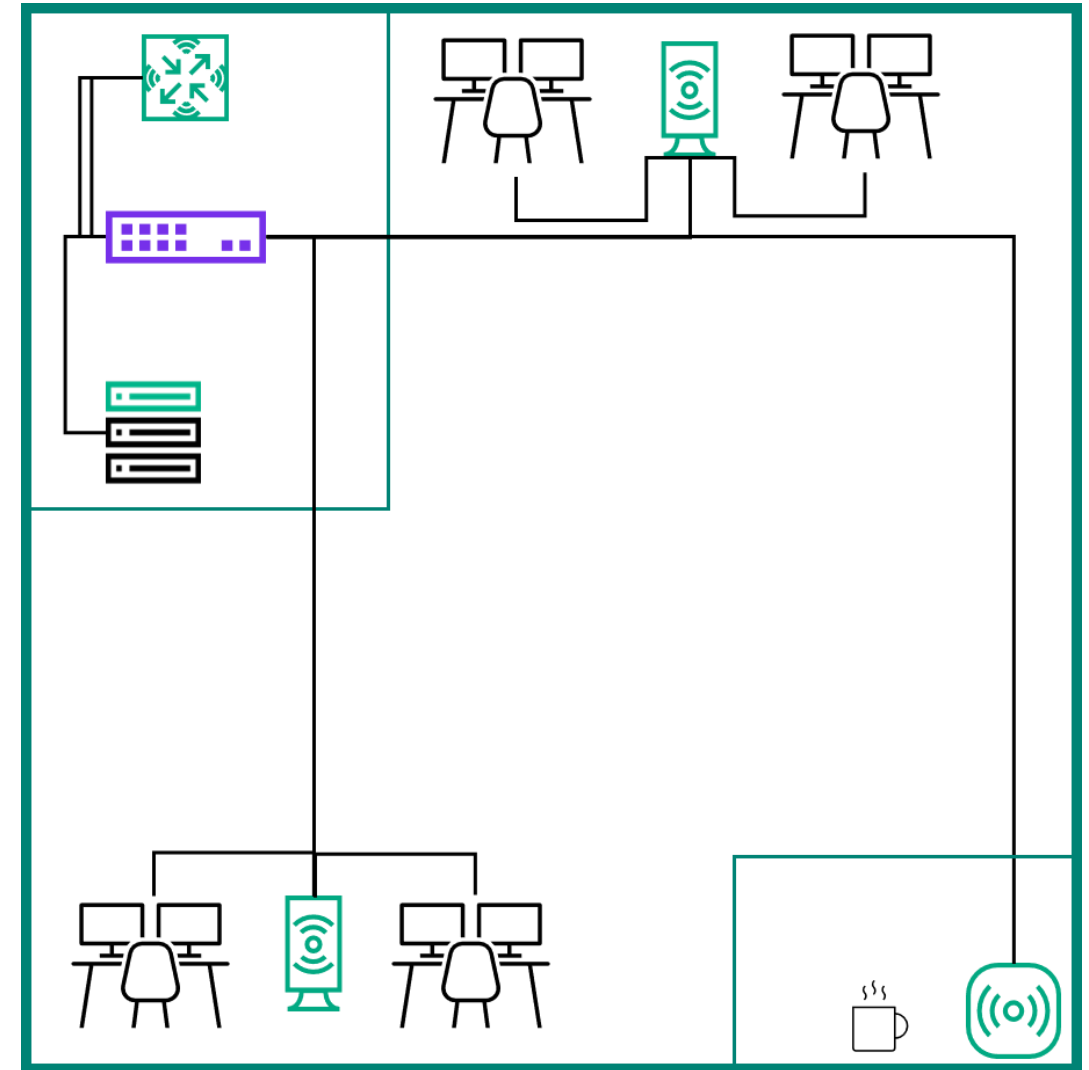


- Direct Ethernet connectivity
- WAN resiliency, automated failover, load balancing
- All security managed with Instant On cloud portal 'Ease of use'

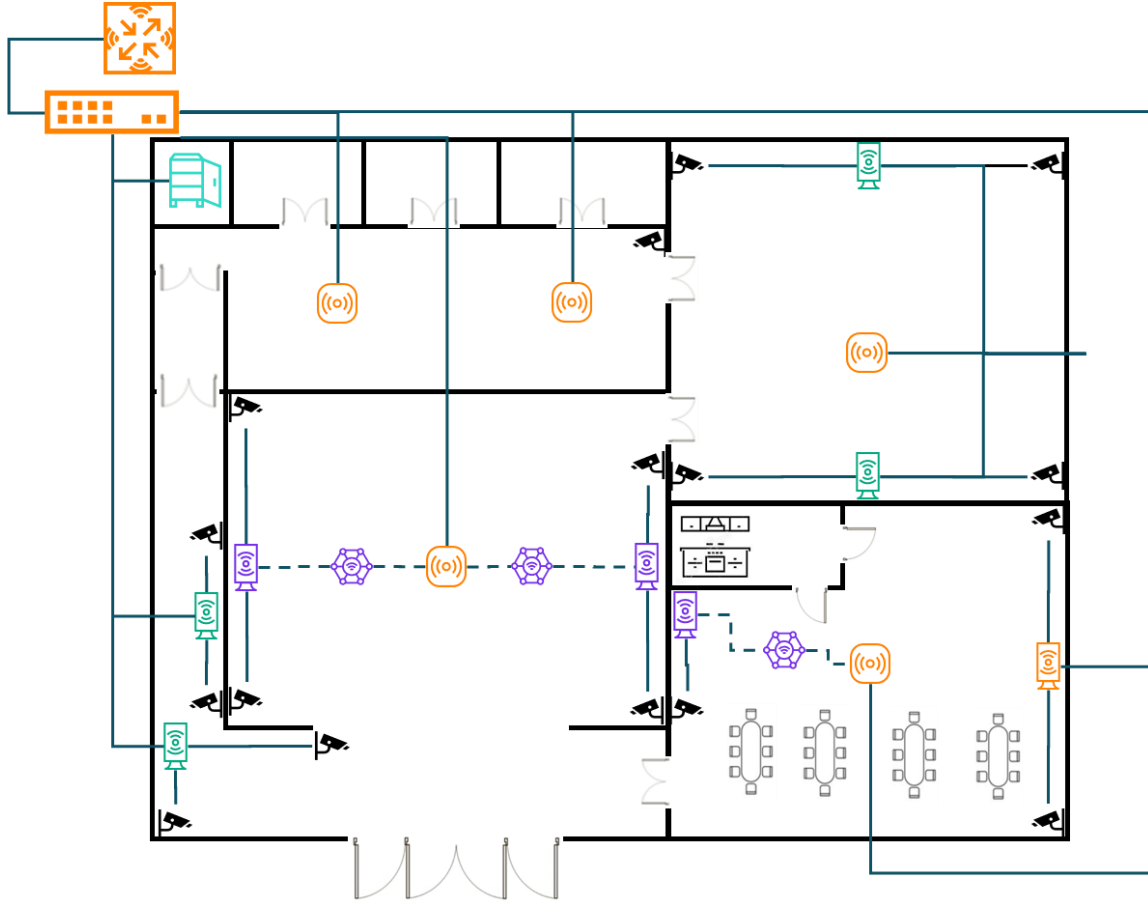
- Non-Ethernet connectivity or the Ethernet ISP device can not be replaced
- Instant On secure gateway may be deployable to raise SMBs' networking security
- Partner shall have expertise to design security across multiple systems

Small or sub-1G bandwidth environments - SG1004

- For small businesses with less than 1Gbps of ISP throughput [ex: accounting firms, insurance agencies]
- Employees are seldom mobile, and guests are limited
- These service companies handle critical customer information and require the same level of security as large businesses
- Network protection without ISP throughput impact thanks for hardware acceleration
 - Business protected from ransomware and phishing scams
- Power it all with the Instant On 1830 switch series
- Support laptops, phones, and personal wireless devices with Instant On AP22D and Instant On AP21

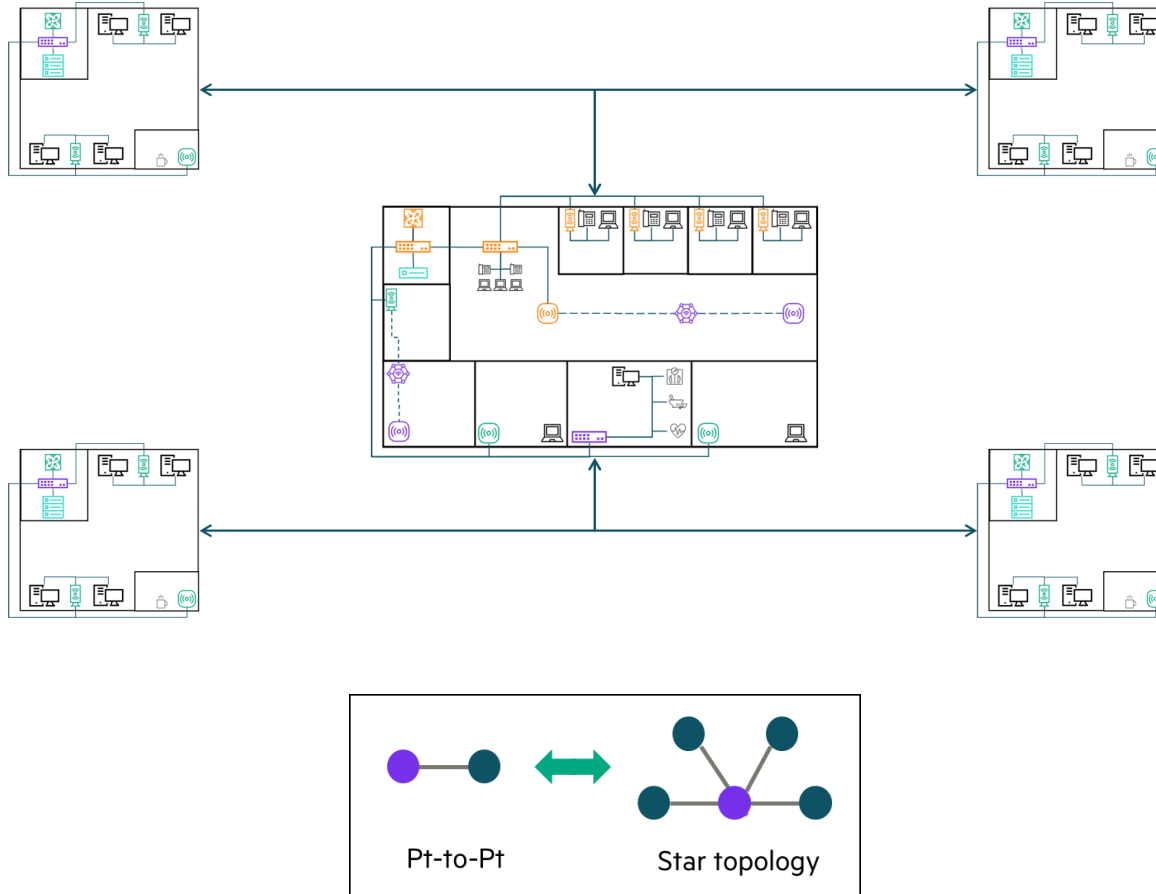


Moderate or high bandwidth deployments - SG2505P



- SMBs with dozens of employees and guests
- Keep the business-critical information safe from bad actors
- Protect guest and customer information without ISP throughput impact thanks for hardware acceleration up to 2.3Gbps
- Great for businesses with diverse user groups: event venues, large restaurants, or shared workspaces
- Instant On Secure Gateway SG2505P makes web use worry free and protected from malware or ransomware
- A complete solution with Instant On Switch Series 1960 and Instant On Access Point AP22D and AP25
 - Built-in security: 802.1X RADIUS, Captive portal, and ACLs

Multiple sites connecting to HQ



- Midsized businesses often have multiple locations
- Hospitals with regional clinics
- Secure access to centrally stored Electronic Medical Records (EMR)
- Deploying Instant On secure gateways ensures encrypted data transfer over the untrusted WAN
- Single click connectivity between sites from secure VPN(s) and protection against threats with built-in firewalls
- Pair with Instant On Switch Series and Access Points for unified and worry-free management

HPE Networking Instant On Access Points



The small business Wi-Fi CERTIFIED 6™ portfolio

Indoor Access Points



**HPE Networking
Instant On
Access Point AP21
2x2:2 802.11ax**



**HPE Networking
Instant On
Access Point AP22
2x2:2 802.11ax**



**HPE Networking
Instant On
Access Point AP32
2x2:2 802.11ax**



**HPE Networking
Instant On
Access Point AP25
4x4:4 802.11ax**



Desk-mounted Access Points



**HPE Networking
Instant On
Access Point AP22D
Desk/Wall
2x2:2 802.11ax**



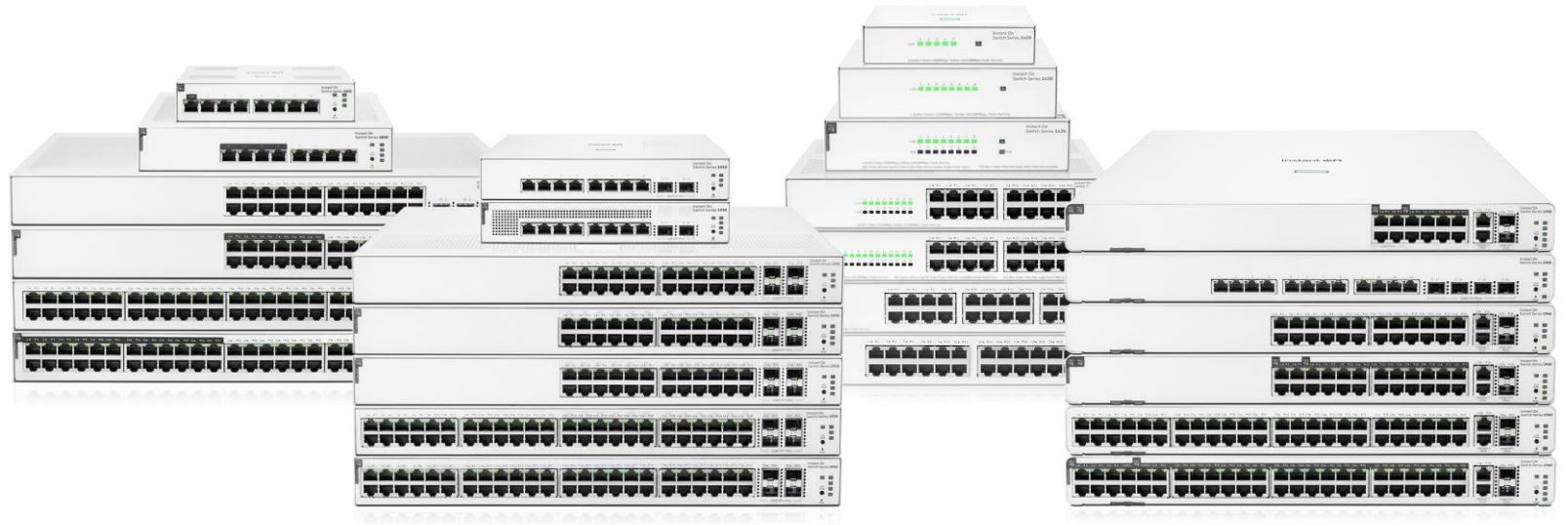
Outdoor Access Points



**HPE Networking
Instant On
Access Point AP27
IP67 Outdoor
2x2:2 802.11ax**



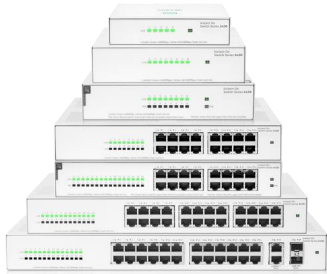
HPE Networking Instant On Switch Series



HPE Networking Instant On wired portfolio

Price

Unmanaged

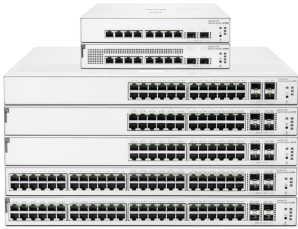


HPE Networking Instant On Switch Series 1430
Gigabit, fan-less

Smart-managed

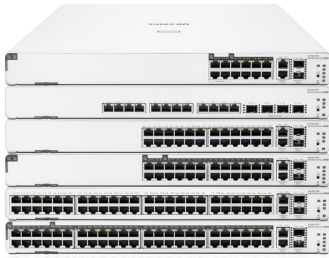


HPE Networking Instant On Switch Series 1830
Cloud Managed and Local Web GUI



HPE Networking Instant On Switch Series 1930
Cloud Managed and Local Web GUI
10G uplinks

Smart-managed and Stackable



HPE Networking Instant On Switch Series 1960
10G Class 4 & Class 6
PoE, Local and Cloud-Managed Stacking
Copper and Fiber uplink ports

Functionality

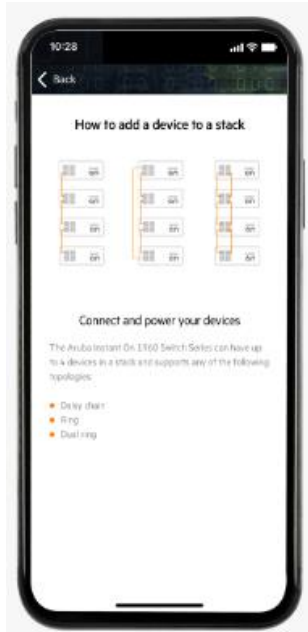


Manage your site, from anywhere, any time

HPE Networking Instant On cloud management platform – simplicity

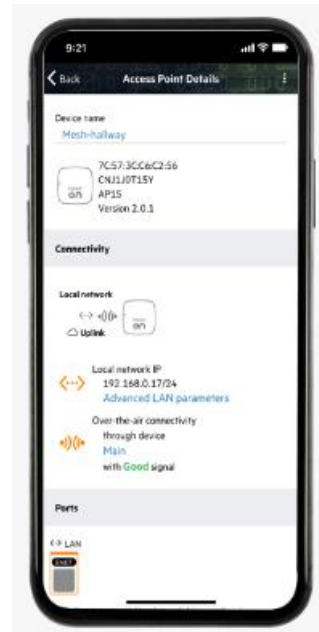
Cloud-managed stacking

Easily auto-discover and onboard an entire switch stack with streamlined workflows



Simplified Smart Mesh setup

Add additional access points and extend your network without additional Ethernet cabling



Guided device setup

Easily add access points and switches to your network with the integrated installation wizard



Hassle-free deployment

Make Instant On the primary Wi-Fi router for your network. Connect your access point to your modem, and you're all set



Important Facts for ION

- number of unlimited site (Recommended limit : 150 sites for best experience)
- maximum of 8 wireless networks (SSIDs) on a site
- maximum of 22 wired networks (VLANs) on a site
- limit to 25 management accounts per site
- maximum of **125** devices (mix of APs & Switches) per site
- Instant On does integrate with ClearPass:
 - no Role based concept
 - 802.1X Authentication and Dynamic VLAN Assignment works



Thank you

