

Alstom Maximo Cloud Migration Journey



Mark Murray
Head of Traversal Processes

ALSTOM

Infosys®

Agenda

- **Introduction**
 - Alstom Transportation
 - Cloud Migration Project
 - Maximo Landscape
- **The Digital Transformation Program**
 - Challenges
 - Key Considerations
 - Migration Approach
 - Cloud Architecture
- **Program Highlights**
 - Lessons Learnt
 - Infosys Partnership
- **Relevance to MAS Upgrade**



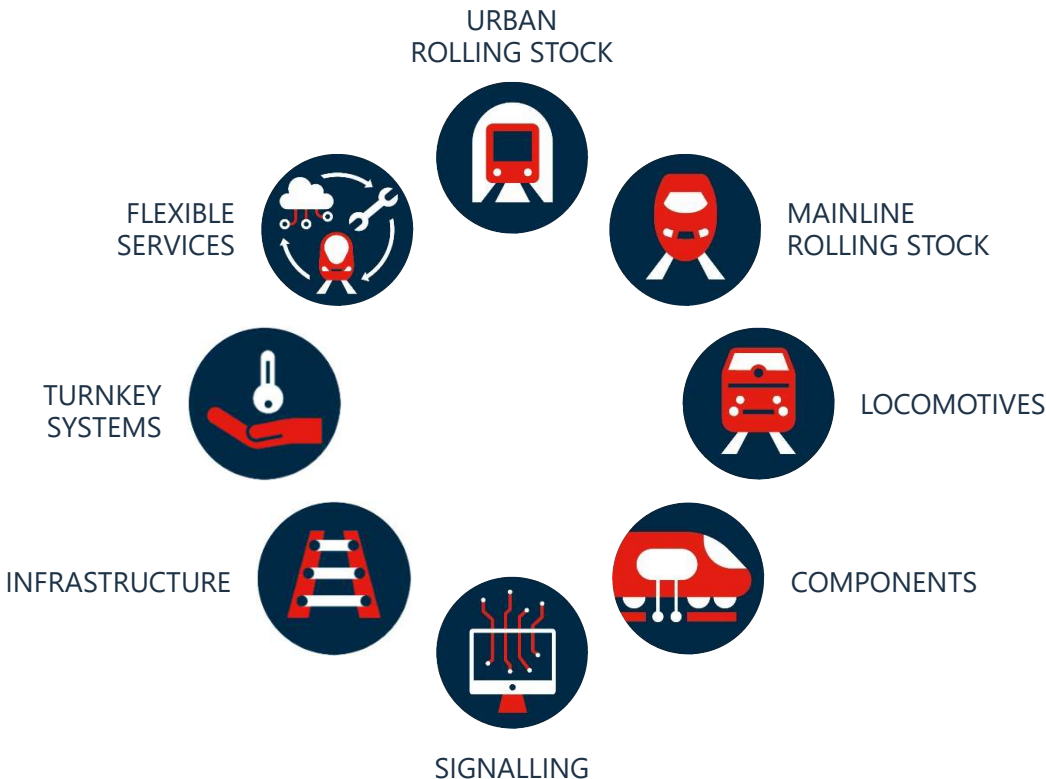
At Alstom, we partner with our stakeholders to optimise transport networks by understanding what moves people. We are proud to work together to reinvent mobility and make transport easier and more intuitive.

A global leader in the transportation sector in the digital age

Leading societies to a low carbon future

Alstom develops and markets mobility solutions that provide sustainable foundations for the future of transportation.

Our comprehensive product portfolio ranges from high-speed trains, metros, monorail and trams, to turnkey systems, services, infrastructure, signalling and digital mobility solutions.



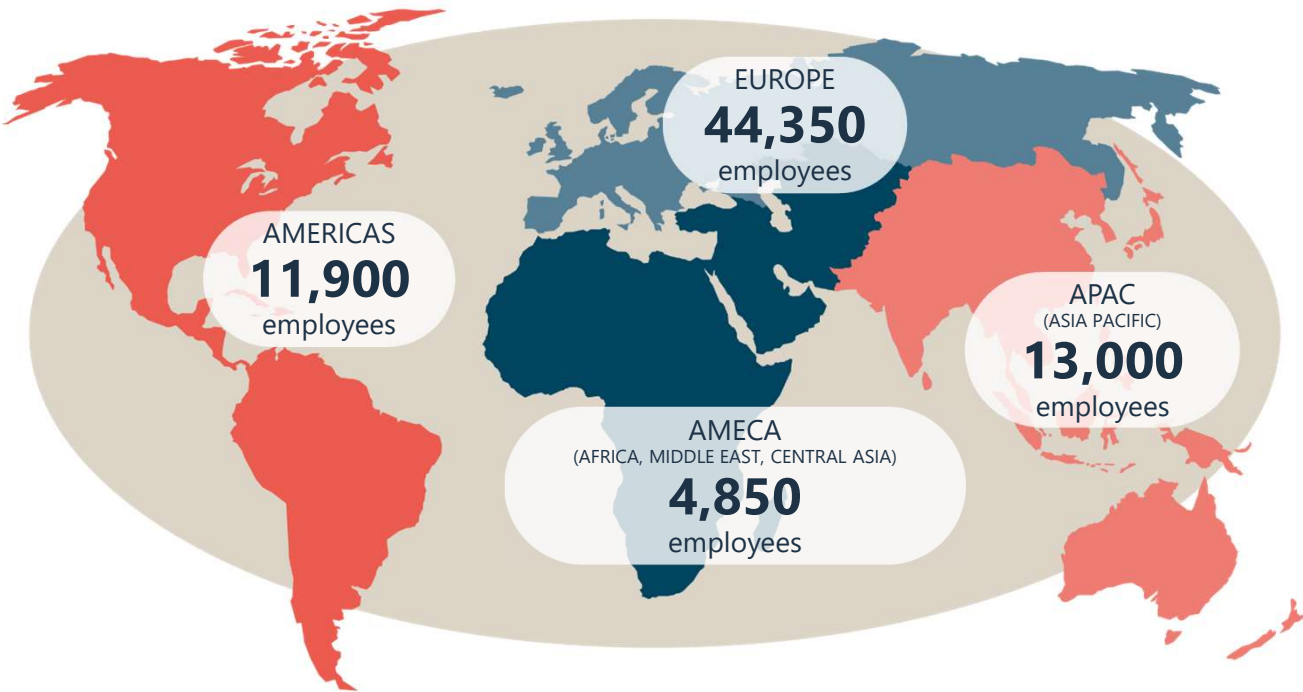
We are where mobility is needed

Over
74,000
employees worldwide

From
166
nationalities

70
countries

Over
250
sites



19,700
engineers

More than
9,400
patents

Over
150,000
vehicles in commercial
service

Partner to over
300
cities



Alstom Transportation

- One of the largest Manufacturers of Rolling Stock, Locomotives, Trams and Rail Equipment across globe
- Alstom's acquisition of Bombardier was in 2021
- We provide after sales Long term Maintenance Service Contracts for customers

IBM Maximo

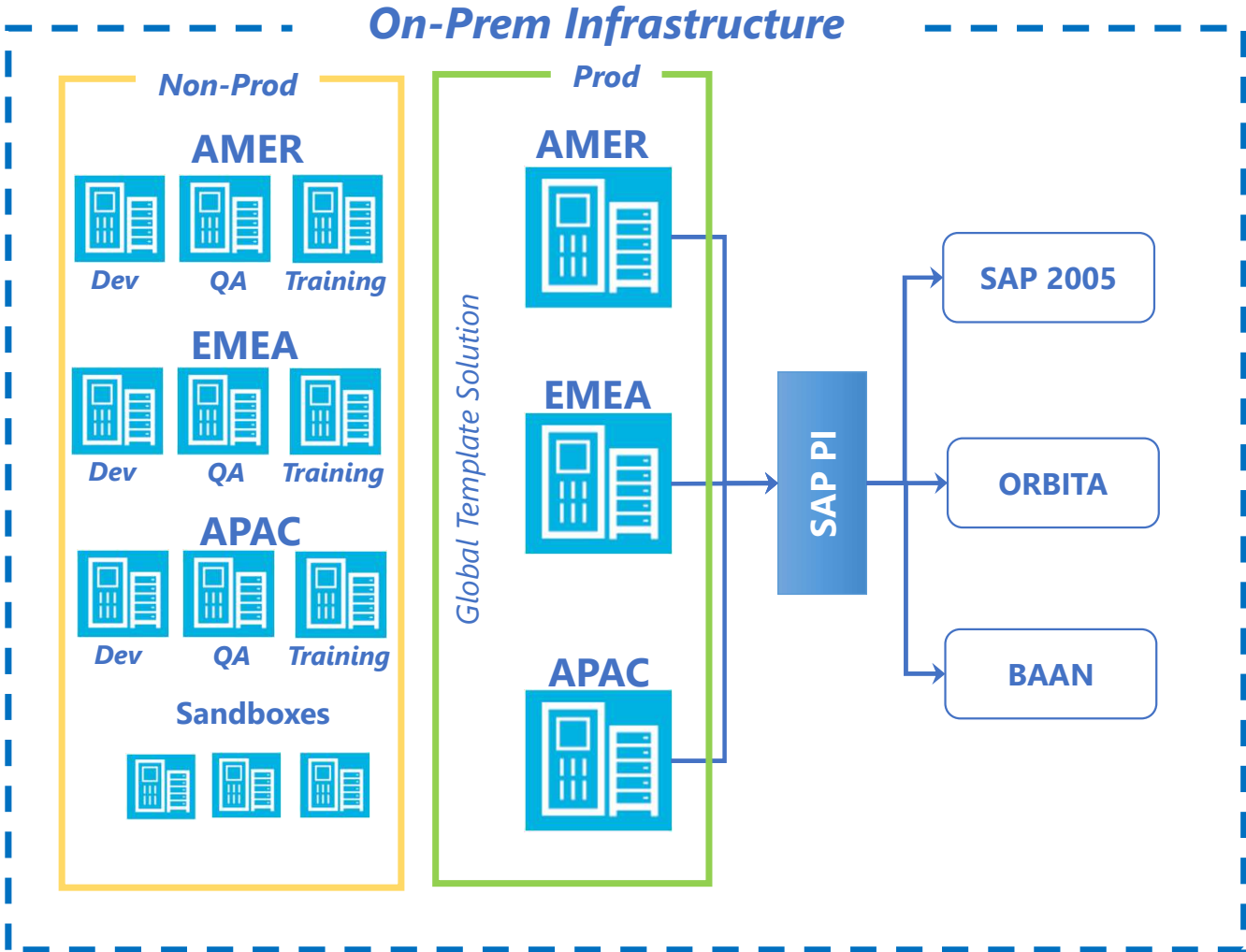
- Maximo in use for more than 30 years from version 4
- Maximo is the EAM tool for handling the maintenance contracts for 285 customers
- Current version 7.6.1.1 with Transportation and Asset Configuration Manager Add-Ons
- Heavily Configured and Customized Global Template
- Integrated with external systems for Procurement, Finance and Condition Monitoring
- 10+ years of Partnership with **Infosys** for support, enhancements, rollouts and integration projects



Cloud Migration – Need of the hour

- **Alstom Digital Transformation Roadmap**
- **Security standards and policies for new application landscape from legacy Bombardier**
- **Improvement in Application performance**
- **Reduce Overhead Cost on Infrastructure maintenance and support**
- **Infrastructure scalability for expanding Customer base**
- **Move closer towards Maximo Application Suite upgrade**

Maximo Landscape Before Migration



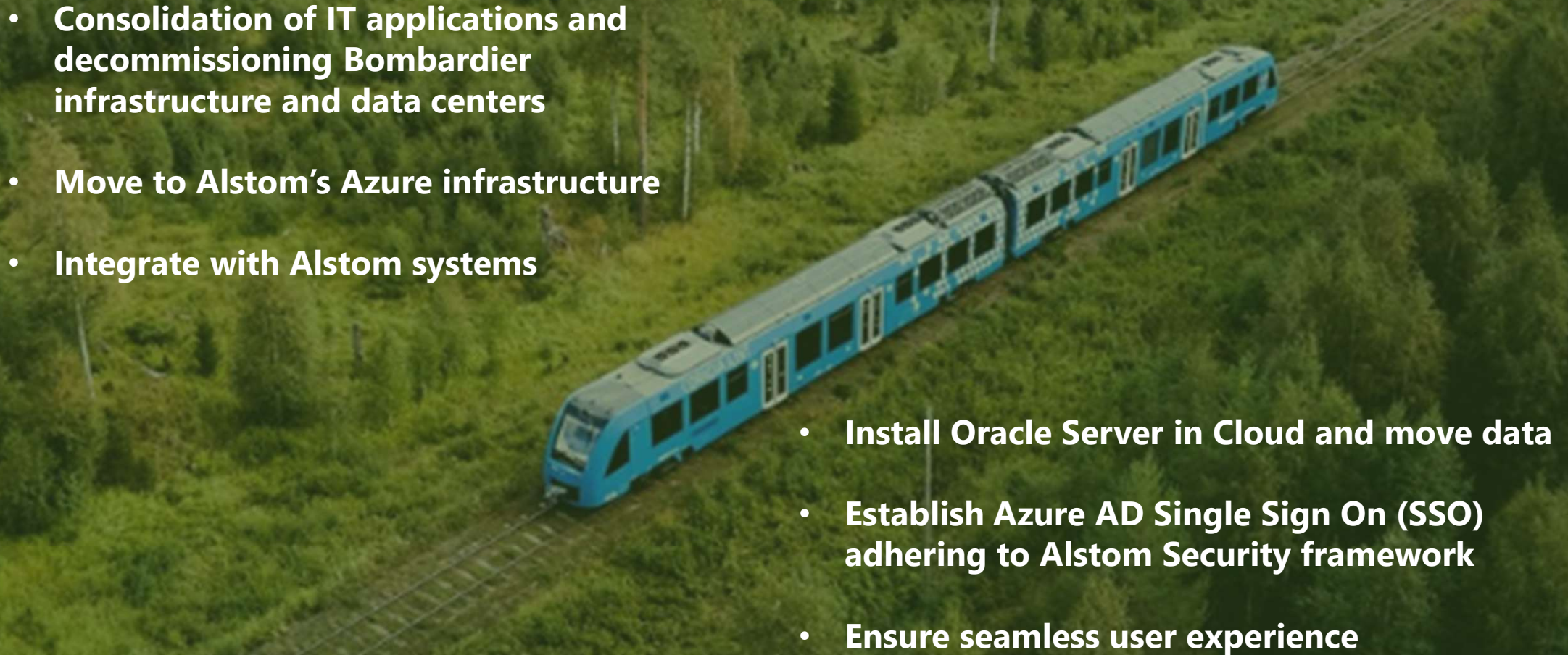
Statistics

| | AMER | EMEA | APAC |
|--|--------|--------|--------|
| | 3400 | 8100 | 2500 |
| | 500 GB | 1.4 TB | 200 GB |

Major Processes

- Model and Subassembly Configuration
- Asset Lifecycle Management
- Maintenance Planning
- Incidents / Problems / FRACAS
- Work Order Management
- Inventory Management

Digital Transformation Program

- Consolidation of IT applications and decommissioning Bombardier infrastructure and data centers
 - Move to Alstom's Azure infrastructure
 - Integrate with Alstom systems
 - Install Oracle Server in Cloud and move data
 - Establish Azure AD Single Sign On (SSO) adhering to Alstom Security framework
 - Ensure seamless user experience
- 
- An aerial photograph of a blue and white high-speed train traveling through a dense green forest. The train is moving from the bottom left towards the top right of the frame. The forest is lush and green, with many trees visible. The train tracks are visible in the foreground and middle ground.



Challenges

- **Complexity due to Involvement of multiple vendors/teams**
- **Huge volume of data – 2.5TB to be migrated to Cloud with historical and transactional live records**
- **Short cutover window (24-48 hours over weekend) to ensure minimum user disruption**
- **Ensuring connectivity for existing interfaces**
- **System Performance on cloud environments across the regions**
- **Major risk of impacting 285 clients and 14,000 appx end-users**
- **Lack of proper documentation for Configurations and Customization**

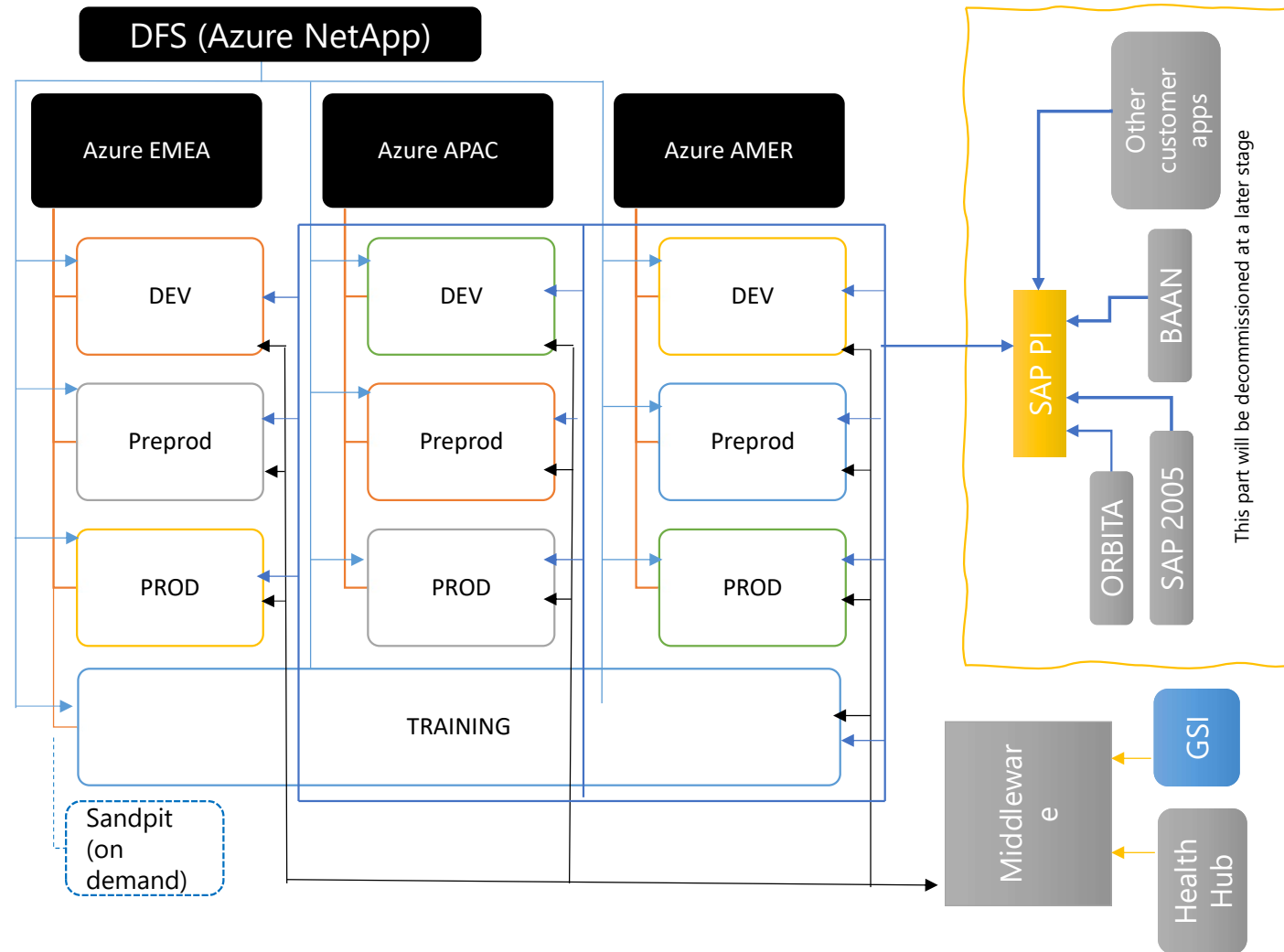
Key Considerations

- **Assessment of Cloud Migration Strategy aligned with organization digital transformation goals**
- **Sizing of Cloud Infrastructure to reduce overall cost and improve system performance**
- **Analysis of different approaches towards migration activities**
- **Partnership with experienced Service Provider**
- **Strong Project Management and Communication**
- **Minimal disruption to End Users with shorter cutover window**



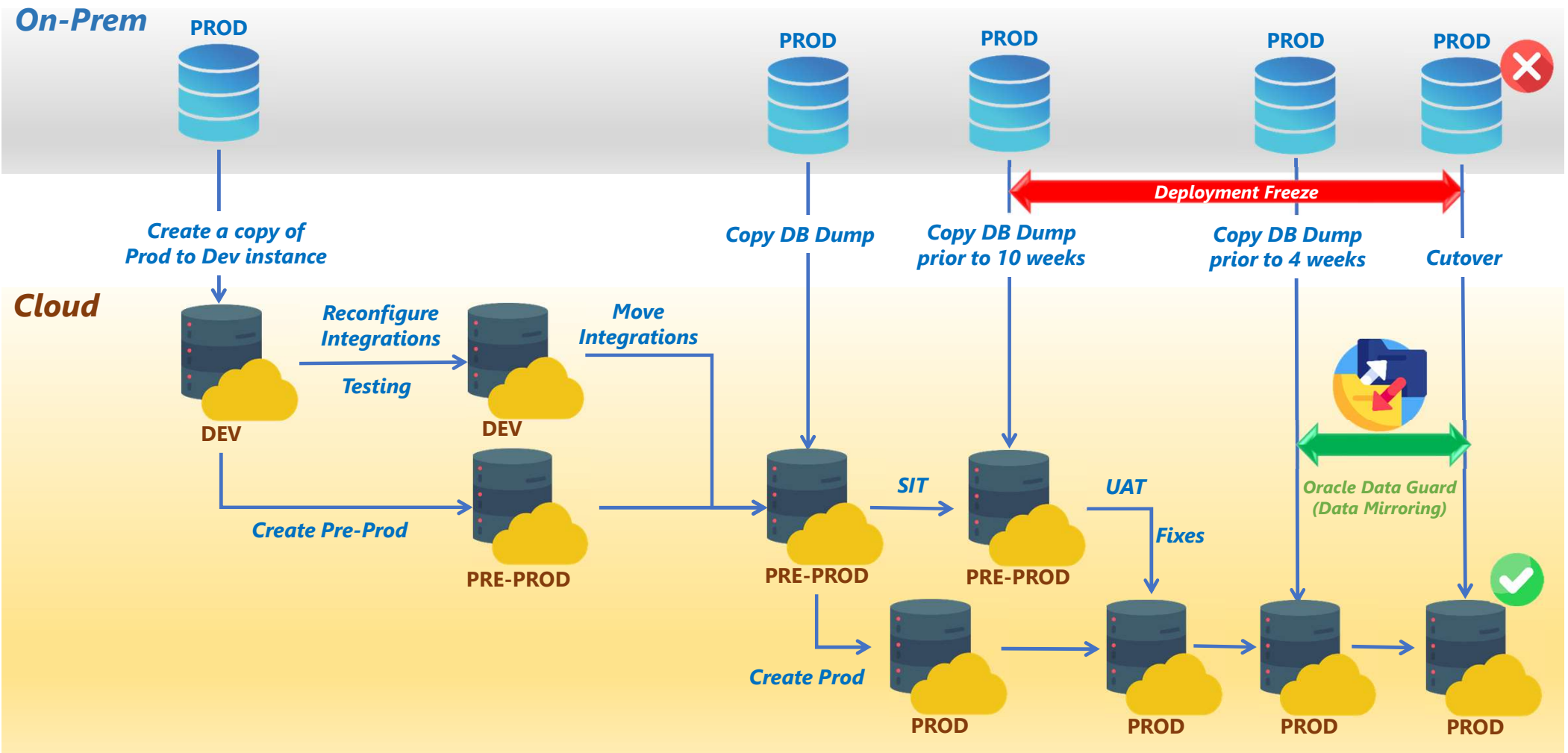
Cloud Architecture

- Equivalent architecture of on-prem Maximo solution in Azure – 3 separate regions for AMER, APAC and EMEA
- All 3 regions have 4 environments each - DEV, Pre-PROD, PROD
- One environment for TRAINING to be used for all the 3 regions
- Sandpit Environment



Migration Approach

9 Months (AMER → APAC → EMEA)



Business Benefits

A high-speed train, primarily red and grey, is shown in a station platform. The train is sleek and modern, with large windows and a prominent front. The platform is brightly lit with overhead lights, and the background shows the structure of the station.

- **Reduction in Overall Infrastructure maintenance cost**
- **Reduction of cutover window from 5 days to 2 days using Oracle Data Guard approach**
- **Use of Oracle Database for target architecture resulted in cost savings.**
- **Establishment of Azure AD Single Sign On reducing 600 Service requests annually for user creation / deletion**
- **Optimized infrastructure scalable for future demands**

Lessons Learnt

- **Well defined Cloud Migration Strategy, preparation and leadership support**
- **Proper sizing assessment for Cloud infrastructure**
- **Strong Project Management, Coordination and communication**
- **Engagement with right partner with Maximo and Cloud experience**
- **Test – Test – Test**
- **Use of Data Mirroring tools for seamless cutover**
- **Ensuring availability of proper documentation on Configurations / Customizations**



Infosys – The Right Strategic Partner for Alstom

- Long standing relationship – Partner than a Service Provider
- 18+ years of experience with 300+ certified consultants on Maximo projects
- Breath of Service Offerings from Consulting, Implementation, Upgrade, Integrations and Support
- Platinum partnership with IBM
- Domain experience across multiple industry segments such as Utilities, Transportation, Manufacturing
- Strong Cloud Migration expertise across IBM, AWS, Azure Cloud
- Cost effective Global Delivery Model

GUIDED BY OUR PURPOSE - TO AMPLIFY HUMAN POTENTIAL AND CREATE THE NEXT OPPORTUNITY FOR PEOPLE, BUSINESSES AND COMMUNITIES

40+ YEARS OF REINVENTION SINCE 1981

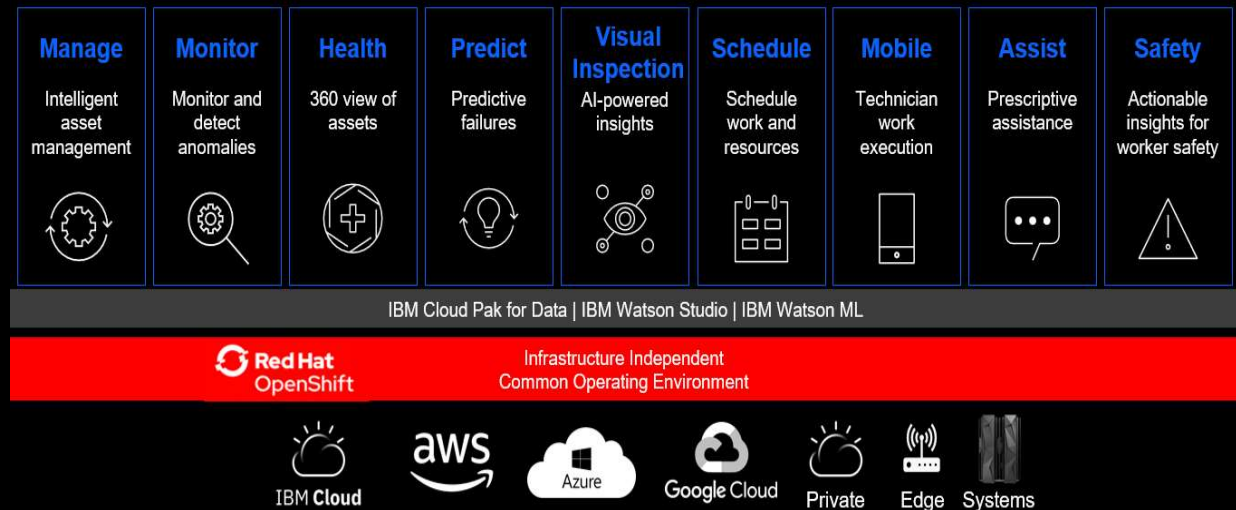
343,234 PASSIONATE NAVIGATORS COLLABORATING WITH 1,872 TRUSTING CLIENTS FROM THE 50+ COUNTRIES WE ARE PRESENT IN

US\$18.21 BILLION IN REVENUE (LTM), 62.9% REVENUES FROM DIGITAL IN Q4 FY23



Relevance to MAS Upgrade

- Infrastructure Independent RedHat OpenShift Operation Environment
- Versatility to work across different cloud options
- Cloud infrastructure relevant to support entire Suite features
- Scalability and Cost Benefits on Cloud options
- Alignment with Organizational Digital Transformation Goals
- Utilization of IoT/AI/ML features for improved maintenance



A sleek, white high-speed train is shown from a front-three-quarter view, positioned in a large industrial facility. The train's nose is aerodynamic and pointed. A driver is visible in the cockpit. The background features a large, blue corrugated metal wall with the Alstom logo prominently displayed. The logo consists of the word "ALSTOM" in dark blue, bold, sans-serif capital letters, with a red circular graphic element integrated into the letter "O".

ALSTOM

Thank You