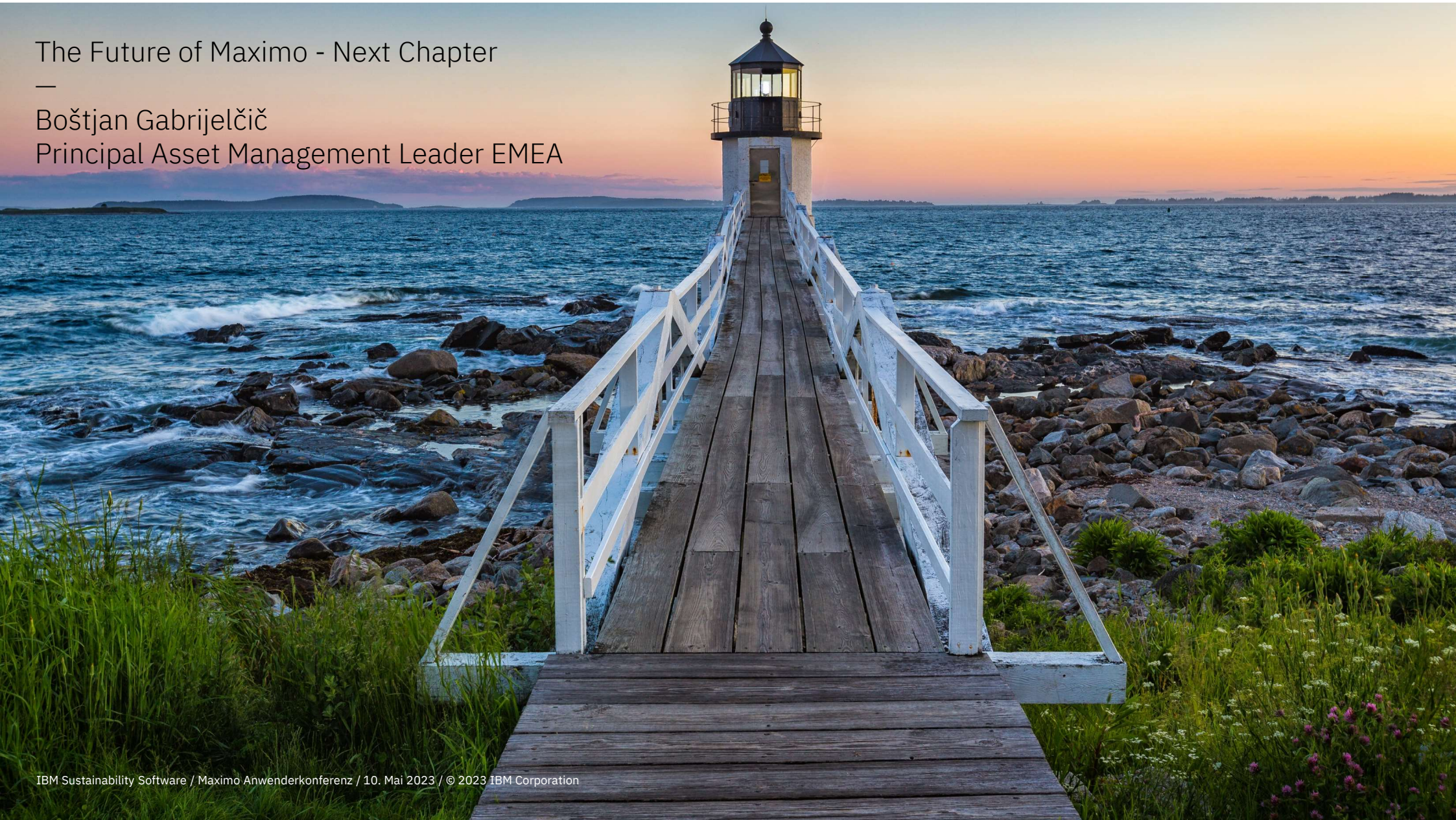


# The Future of Maximo - Next Chapter

—  
Boštjan Gabrijelčič  
Principal Asset Management Leader EMEA





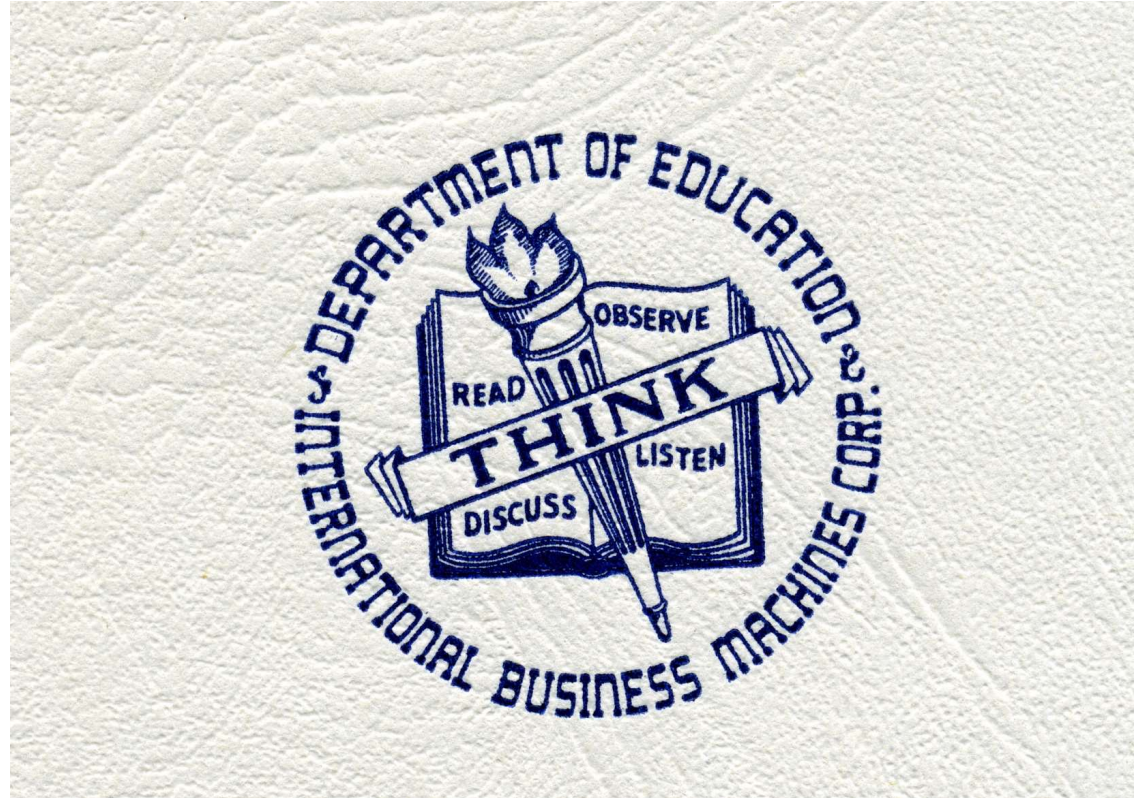
# Please note

- The information mentioned regarding potential future products is not a commitment, promise, or legal obligation to deliver any material, code or functionality. Information about potential future products may not be incorporated into any contract.
- The development, release, and timing of any future features or functionality described for our products remains at our sole discretion.
- IBM's statements regarding its plans, directions, and intent are subject to change or withdrawal without notice at IBM's sole discretion.
- Information regarding potential future products is intended to outline our general product direction and it should not be relied on in making a purchasing decision.



# Key topics

- Artificial Intelligence / Generative AI
- Robotics / Visual Inspection / Edge
- Mobile / User Experience / Augmented Reality
- Sustainability
- Resiliency / Scalability / Functionality





# Managing the World's Infrastructure

Global warming

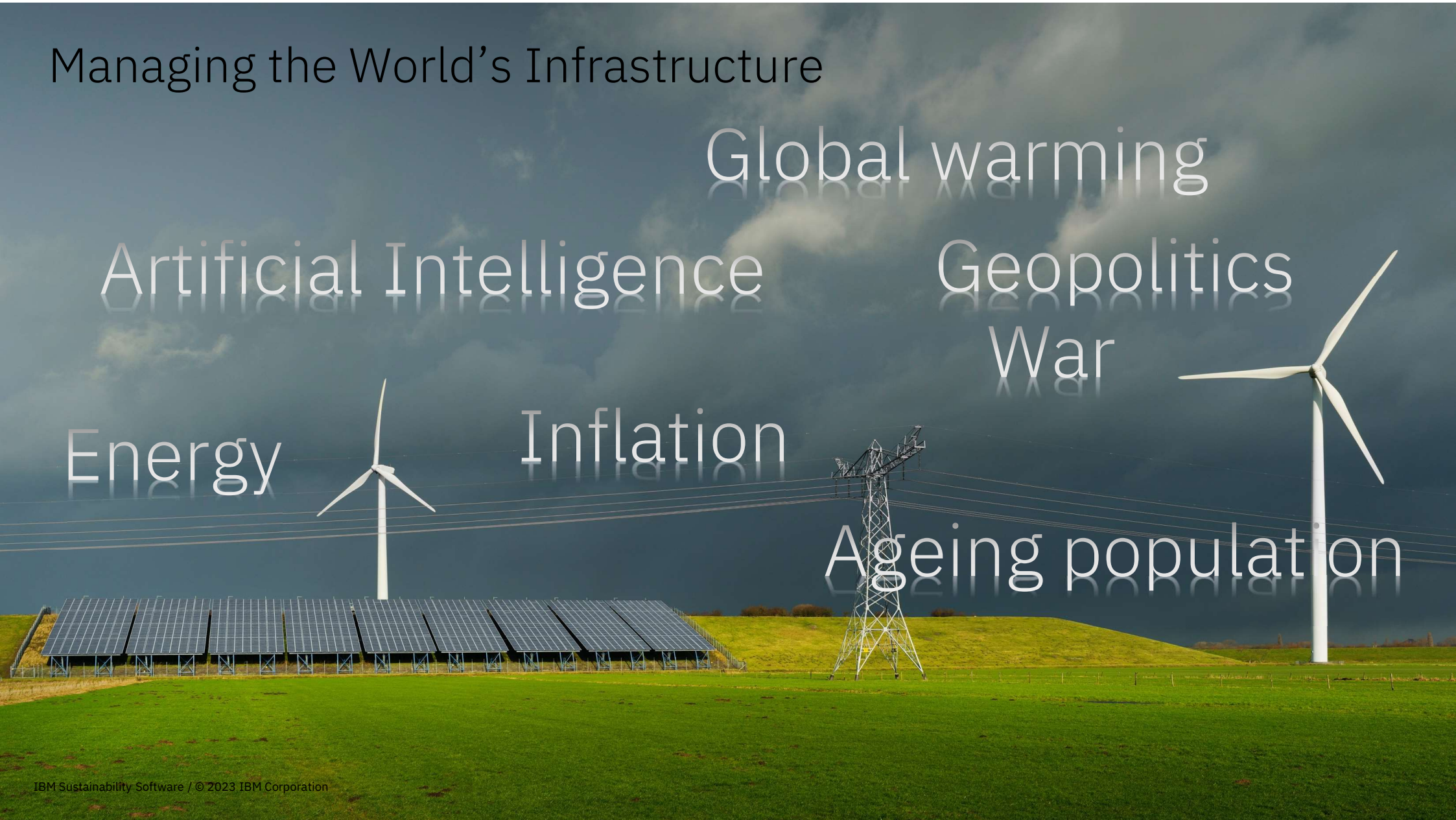
Artificial Intelligence

Geopolitics  
War

Energy

Inflation

Ageing population





# Digitalisation Adoption

- Mobile 37%
- Predictive Maintenance 15%
- Inspection Robots 11%
- Augmented Reality 9%
- 3D Printing 7%

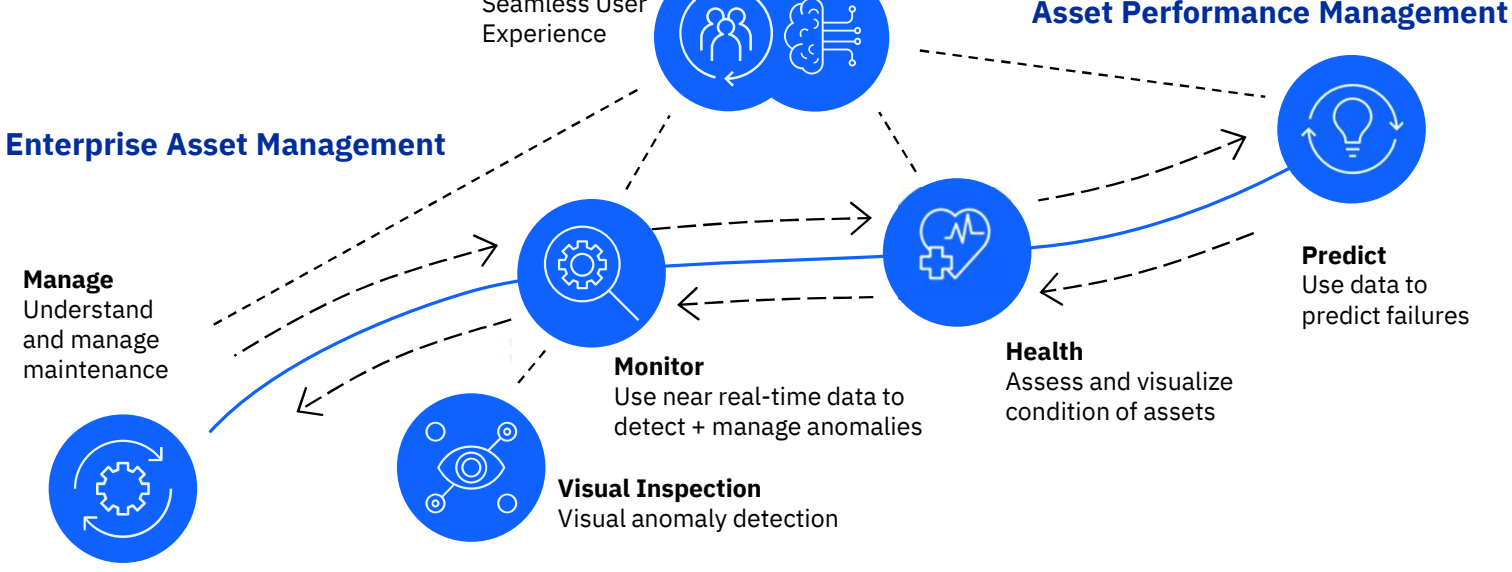


2018 Survey of companies in Belgium,  
Germany and the Netherlands.



# Maximo Application Suite

## *Journey to AI*



**Core Platform Capabilities are shared between functions and users**

- Artificial Intelligence**  
Receive critical data and instruction based on AI-generated criteria
- Robotics**  
Use mobile robots for enhanced data collection
- Visual + Acoustic Insights**  
Analyzes data from visual + acoustic sensors to ID issues in real time
- Edge**  
Integrate with operations and production at the point of work
- Mobile**  
Connected to EAM platform with APM, reference docs, AR





# Artificial Intelligence / Generative AI

*“The only way for industrial enterprises to remain competitive in the coming years is by linking AI to their process automation. Don’t screw this one up.”*

*Prof. Dr. Sepp Hochreiter, JKU Linz University, Austria*



## ChatGPT is changing manufacturing...here's how to use it

"The chatbot can provide quick responses for common issues that customers have, enable faster diagnosis and suggest personalized recommendations."

March 21, 2023



## IDC on Chat GPT in manufacturing

*“Good for clerical work simplification, redundant for other functionalities, but definitely overselling itself sometimes.*

*The advice is to take this technology with a grain of salt.”*

*IDC, FEBRUARY 28, 2023|IN ARTIFICIAL INTELLIGENCE, INDUSTRIES*



ON TECH: A.I. NEWSLETTER

## What Makes A.I. Chatbots Go Wrong?

The curious case of the hallucinating software.

## Chat GPT on Chat GPT in maintenance

*“Overall, ChatGPT can be a powerful tool for industrial maintenance, helping to improve equipment reliability, reduce downtime, and lower maintenance costs. However, it should be noted that ChatGPT is not a substitute for human expertise and should be used in conjunction with experienced maintenance personnel.”*

*ChatGPT, April 2023*



# Chat GPT v4 Q&A Example

[Tech](#) [Artificial Intelligence](#)

## The ChatGPT chatbot from OpenAI is amazing, creative, and totally wrong

Need ideas? Great! Need facts? Stay away!

By [Mike Pearl](#) on December 3, 2022 [f](#) [t](#) [i](#)

BG

*I left 5 clothes to dry out in the sun. It took them 5 hours to dry completely. How long would it take to dry 30 clothes?*



*The time it takes for clothes to dry depends on several factors such as the size and thickness of the clothes, humidity, temperature, and wind speed. However, for the sake of simplicity, we can assume that each piece of clothing takes the same amount of time to dry and that the environmental conditions are constant.*

*So, if 5 clothes take 5 hours to dry completely, we can say that it takes 1 hour to dry one piece of clothing. Therefore, to dry 30 clothes, it would take 30 hours, assuming the same environmental conditions remain constant throughout the drying process. However, in reality, it's highly unlikely that the conditions would remain the same for such a long time, so this estimate may not be entirely accurate.*

*Bostjan Gabriječič, asking Chat GPT  
May 1<sup>st</sup>, 2023*

# Trustworthy AI & IBM AI roadmap



	→ on target	→ on target				
<b>AI journey</b>	<p><b>2023</b></p> <p><i>AI extends beyond natural language processing</i></p>	<p><b>2024</b></p> <p><i>Governance and trust permeate AI</i></p>	<p><b>2025</b></p> <p><i>AI becomes more energy and cost efficient</i></p>	<p><b>2027</b></p> <p><i>Foundation models in production become scalable</i></p>	<p><b>2029</b></p> <p><i>Trustworthy and explainable AI starts to reason</i></p>	<p><b>2030</b></p> <p><i>Fully multi-modal AI gives enterprises unprecedented scale</i></p>
<b>Strategy overview</b>	<p>2023 will expand enterprise foundation model use cases beyond natural language processing (NLP). 100B+ parameter models will be operationalized for bespoke, targeted use cases, opening the door to broader enterprise adoption.</p>	<p>In 2024, we will integrate trust guardrails throughout the AI foundation models lifecycle and AI governance at the organizational level. Data representations will optimize across privacy, fairness, explainability, robustness, etc.</p>	<p>In 2025, we will improve the energy and cost efficiency of foundation model training and inference by 5x and bring 200B+ parameter foundation models to enterprises. It's all about making them more powerful, useful, and practical.</p>	<p>By 2027, we will be routinely doubling the number of foundation model parameters in production for the same energy envelope every 18 months. Training and inference will be 4x more energy efficient vs. 2025.</p>	<p>2029 will be an inflection point. AI will support diverse forms of reasoning with explainability and trust. Energy efficiency will increase 4x more and scalable, operationalized AI models will be routine in enterprises.</p>	<p>By 2030 and beyond, fully multi-modal architectures will learn diverse data representations, and developers will be able to manipulate them at multiple levels of abstraction to give enterprises competitive advantage.</p>
<b>Why this matter to our clients and the world</b>	<p>The expansion of AI foundation models will lower the barrier for entry, broaden the use cases, reduce labeling requirements for training by 10-100x, and provide greater efficiencies through reuse of models across use cases.</p>	<p>Governance and trust in AI will drive significant business value by enabling advanced AI in mission-critical use cases while increasing automation, improving the quality of AI regulatory compliance, and maintaining customer trust.</p>	<p>Reducing cost and improving power efficiency will make foundation models more practical for enterprise workloads and promotes deployment across many enterprise use cases.</p>	<p>Foundation models will scale with growing data volumes and model complexity. A full stack infrastructure will be able to support enterprise data warehouses based on foundation model representations.</p>	<p>2029 AI means robust and explainable NLP, reasoning over text, and generation of knowledge and trustworthy natural language to advance mission critical use cases. Tuning of domain-specific AI models will be 10x faster and cheaper.</p>	<p>By being able to predict, act, plan, and adapt to new situations and environments, these unified neural architectures — grounded in biological brains — will broaden use cases even further while reducing energy consumption.</p>

<https://pages.github.ibm.com/technology-atlas/roadmaps/ai/>

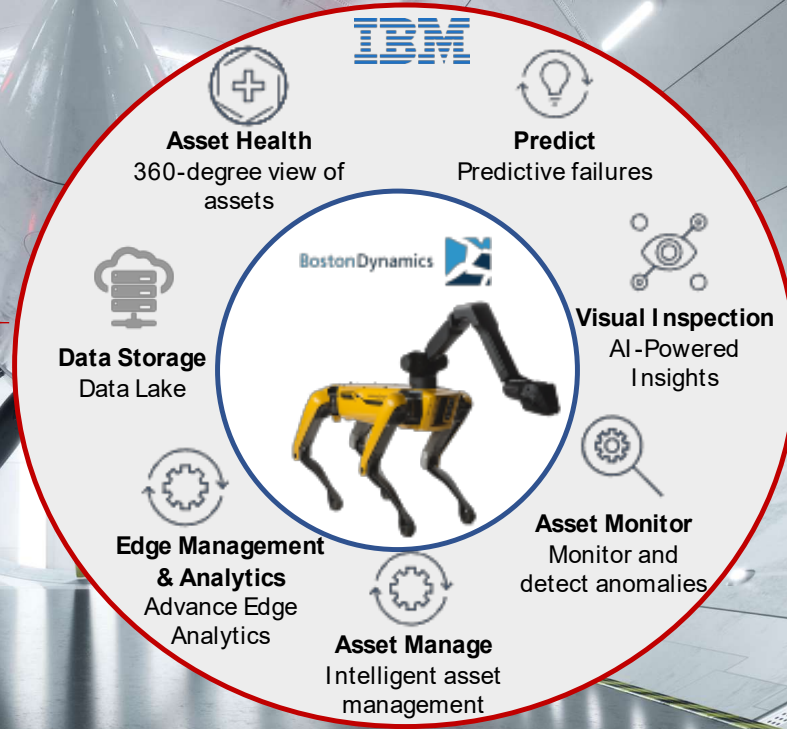


# Robotic Automation

-  Manufacturing
-  Energy & utilities
-  Public safety
-  Oil, Gas and Mining industry
-  Warehousing
-  Building Infrastructure

- Inspection (Production and Quality)
- Onsite Mobile Surveillance
- Worker and Public Safety
- Remote site inspection**
- Predictive Maintenance
- Inventory tracking and Material handling
- Digital Twin Designing

## IBM's Intelligent SPOT Solution



-  Maintenance squad
-  Production planning
-  Safety Dept
-  Admin
-  Service/OEM Partner

Catch Issues Sooner + Prevent Failures

**50%** Decrease in unplanned downtime

Reduce Preventive Maintenance Costs

**60%** Defer unnecessary PMs by knowing asset health

Increase Efficiency of Repair

**20%** Increase first-time fix rate and improve technician productivity



# SPOT at Paris Underground



Noise Anomaly Detection



Leak Detection



Gauge Reading



Radiation Detection



Telemedicine



Thermal Inspection



Search and Alert



Gas Detection



Site Documentation



Digital Twin Creation

*As the city of Paris sleeps, Spot is hard at work inspecting some of RATP Group's 35,000 civil works components. See why [RATP Group](https://www.ratp.fr) has turned to mobile robotics to inspect hard-to-reach and hazardous areas. <https://bit.ly/3JWdrNy>*





# IBM-SPOT IR Inspection Electric Room - Transformer

Touch To Move is only supported while using the 360 camera

25.65 °C

14.85 °C

30.74 °C

FAST

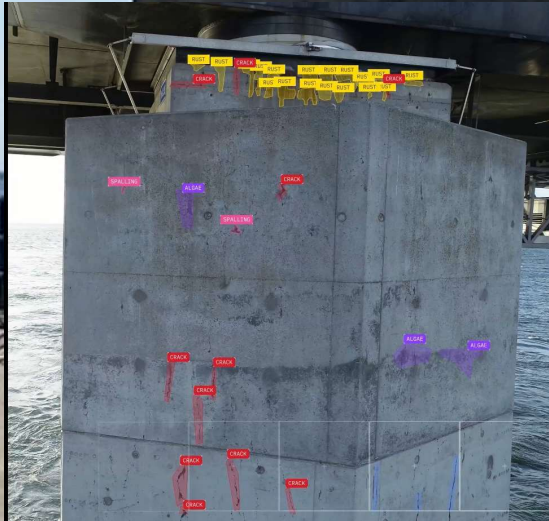
HT

Stand B Walk A

STOP



# Sund & Baelte Drone Inspection





# End User Experience is King

*Real users don't read manuals*

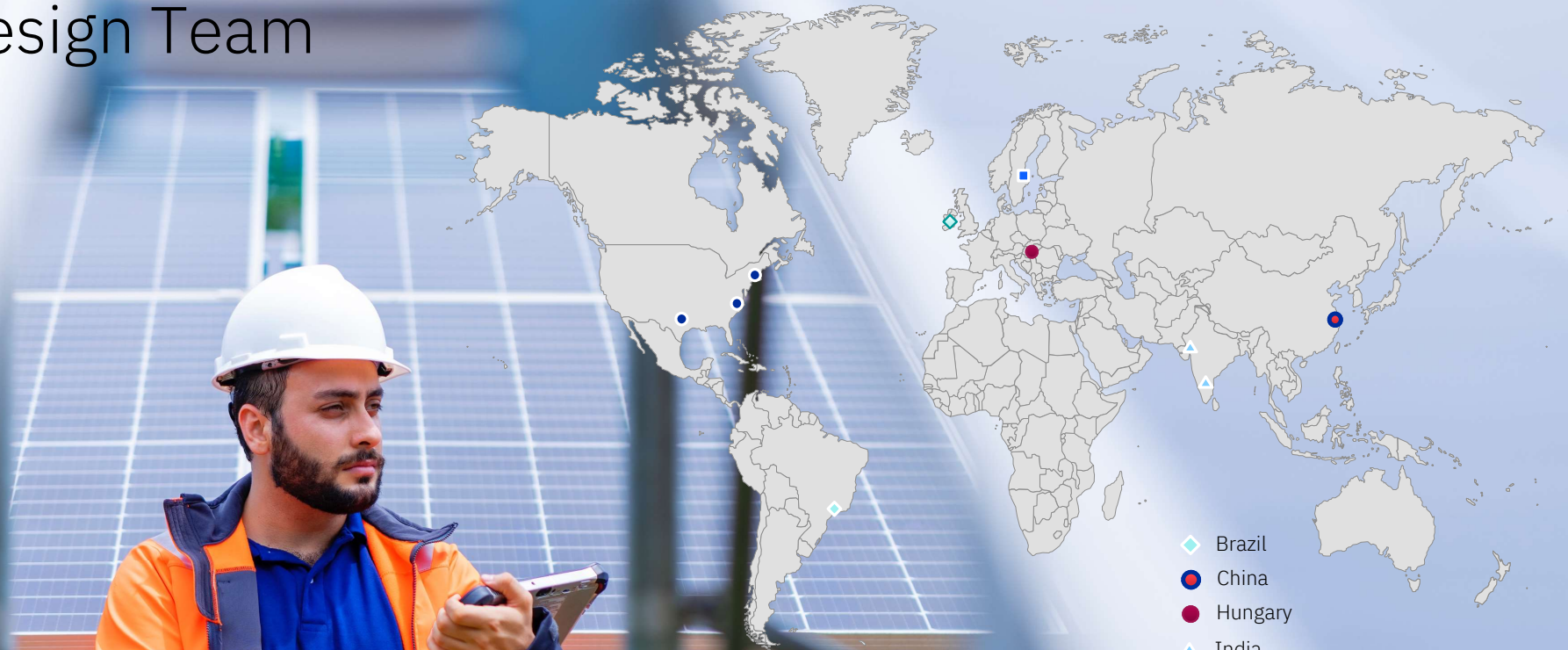
## **Seamless / Mobile / Intuitive / All generations**

- Enterprise Asset Management & Asset Performance Management
- Documentation
- Augmented Reality / Remote Assistance
- AI guidance & Learning

*“Perfection is Achieved Not When There Is Nothing More to Add, But When There Is Nothing Left to Take Away”  
Antoine de Saint-Exupery.*



# Maximo Design Team



- ◆ Brazil
- China
- Hungary
- ▲ India
- ◆ Ireland
- Sweden
- USA



# Sustainability is a global megatrend

The world's largest corporations and governments are **accelerating** decarbonization commitments, amid increasing scrutiny of **ESG disclosure**

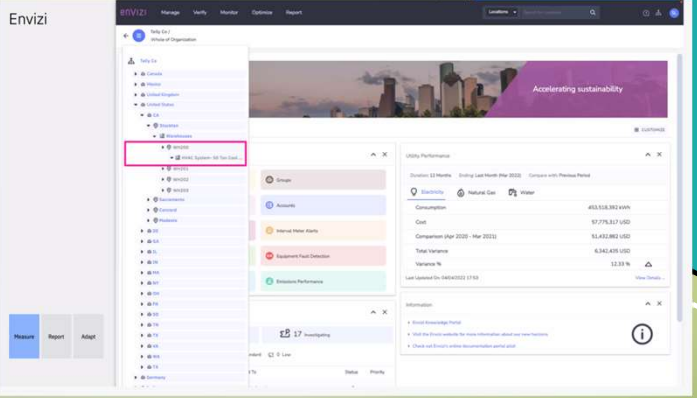
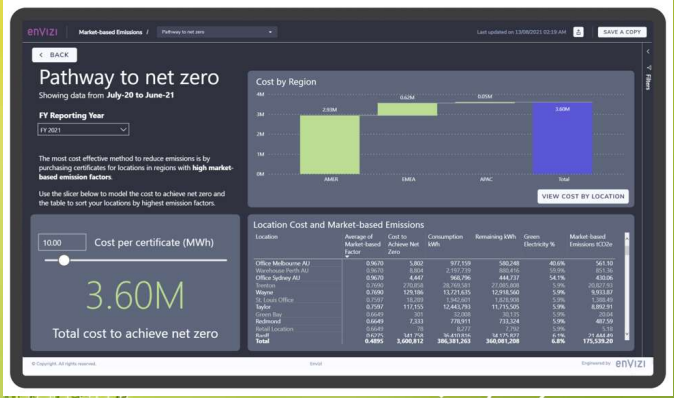
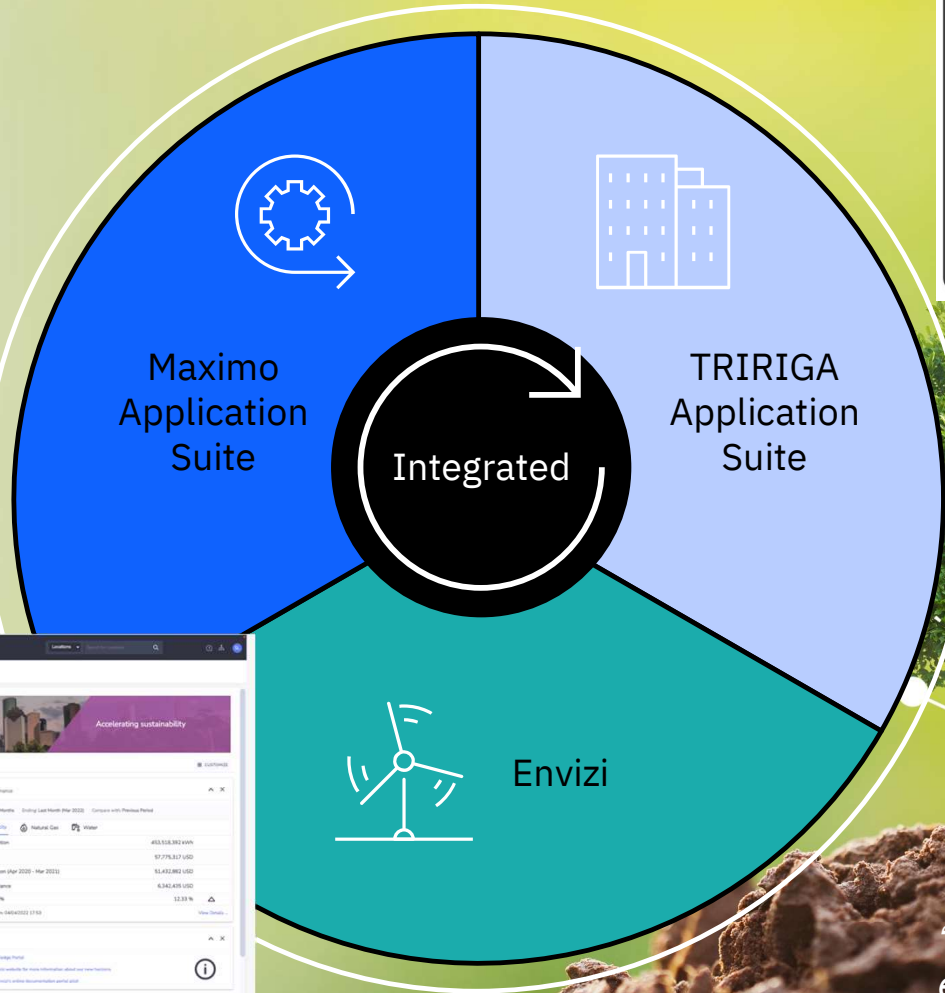
## Corporate Sustainability Reporting Directive (CSRD)

Mandatory for large EU companies\* to publicly disclose ESG performance  
2024 data for 2025 reporting



# Automating ESG

- Receive location, asset, and emissions information for ESG reporting
- Identify focus areas & assets
- Plan & execute decarbonization projects



**Jane Muir-Sands**  
Vice President Global Real Estate and Operations at IBM

**Customer #0**

*“High performance asset management equals high performance sustainability”*

*Brody Wilson, Sustainability Manager, IBM Global Real Estate*



Maximo Resiliency & Scalability

# Default Operations



# Critical Situations





# Maximo 5 year High-level Roadmap

2022

2023

2024

2025

2026

## Manage

- Scheduling Dashboard
- Operational Dashboard
- Indoor Mapping
- **Manage IS/Add-ons**
- Updates**
- Civil Infrastructure
- Nuclear
- O&G/HSE
- MAS SaaS**
- Self service enhancements
- Security and regulatory compliance updates
- Maximo Mobile**
- Current Mobile App enhancements
- Storeroom Clerk – Inventory Counting
- Defect App
- Asset Manager/Auditor
- Maximo Application Suite**
- Consolidated platform
- Monitor
- Health
- Predict
- Visual Inspections

## Manage

- Scheduler Dispatch
- Operational Dashboard
- Enhanced Configuration
- Manage IS/Add-ons**
- Maximo IT (fka ICD)
- Civil Infrastructure
- Scheduler/Scheduler Plus
- Optimization
- MAS Cloud Deployment**
- Hybrid Cloud support
- AWS SaaS
- Security & Regulatory Compliance updates
- Maximo Mobile**
- Storeroom Clerk
- Support for e-sig
- Maximo Application Suite**
- Manage (EAM)
- Containerized deployment with Single Node OpenShift
- Monitor, Health, Predict
- Cognos reporting
- Visual Inspections

## Manage

- Asset Reliability Enhancements
- Asset Cost Rollup
- Additional Work Centers/UX
- Industry Solution and Addon updates
- Maximo Cloud Deployment**
- Fisma/FedRamp
- Rolling upgrade
- Continued Security & Regulatory Compliance updates
- Maximo Mobile**
- Enhanced applications for the technician
- Maximo Application Suite**
- Industry Accelerators
- Expanded scoring and models
- Updates to Monitor, Health, Predict, MVI

## Manage

- Supply Chain – Manifesting, Hazardous Materials Mgmt
- Platform Improvements
- Workflow engine updates
- Industry Solution and Addon updates
- Maximo Cloud Deployment**
- Additional applications
- Continued Security & Regulatory Compliance updates
- Serviceability
- Maximo Mobile**
- New and enhanced applications, Offline Work centers
- Maximo Application Suite**
- Optimized Investment Planning
- 3-D Visualization
- Updates to Monitor, Health, Predict, MVI

## Manage

- Customer and Market driven enhancements
- Improved Reporting and Data management
- Industry Solution and Addon updates
- New Industries or Markets**
- Mining
- others
- MAS Cloud Deployment**
- Continued Security & Regulatory Compliance updates Serviceability
- Maximo Mobile**
- New and enhanced applications, Offline Work centers
- **Maximo Application Suite**
- Asset Performance benchmarks
- Updates to Monitor, Health, Predict, MVI

*Notice: IBM's statements regarding its plans, directions, and intent are subject to change or withdrawal at IBM's sole discretion. Information regarding potential future products is intended to outline our relied on in making a purchasing decision. The information mentioned regarding potential future products is not a commitment, promise, or legal obligation to deliver any material, code or functionality. Information about potential future products may not be incorporated into any contract. The development, release, and timing of any future features or functionality described for our products remains at our sole discretion.*



# Uptake's Asset Strategy Library

IBM Maximo Application Suite will integrate Uptake's advanced optimization algorithms and content libraries capabilities into its existing suite of asset management tools, providing customers with an even more powerful solution for managing their assets.

## Uptake Knowledgebase

800+

critical asset types covered

5K+

preventative maintenance tasks and intervals organized by operating context

58K+

universal failure mechanisms spanning all known operating contexts

32K+

years of professional industry experience

## Customer Outcomes

UP TO 20%

reduction in maintenance costs

UP TO 15%

improved reliability

~75%

faster than traditional RCM

UP TO 37%

labor hour reduction via elimination of ineffective tasks

Introducing RCM based capabilities and libraries within MAS:

- ✓ Rapid FMEA-based asset strategy creation
- ✓ Prebuilt FMEA libraries, PMs, and Job Plans
- ✓ Advanced PM Optimization balancing reliability, cost, and operating context
- ✓ Unified platform (EAM+APM) for strategy deployment and work execution

UPTAKE ASSET STRATEGY LIBRARY® EXPLORER

**OPTIMIZE YOUR  
PREVENTATIVE  
MAINTENANCE  
STRATEGIES**

# Maximo Application Suite

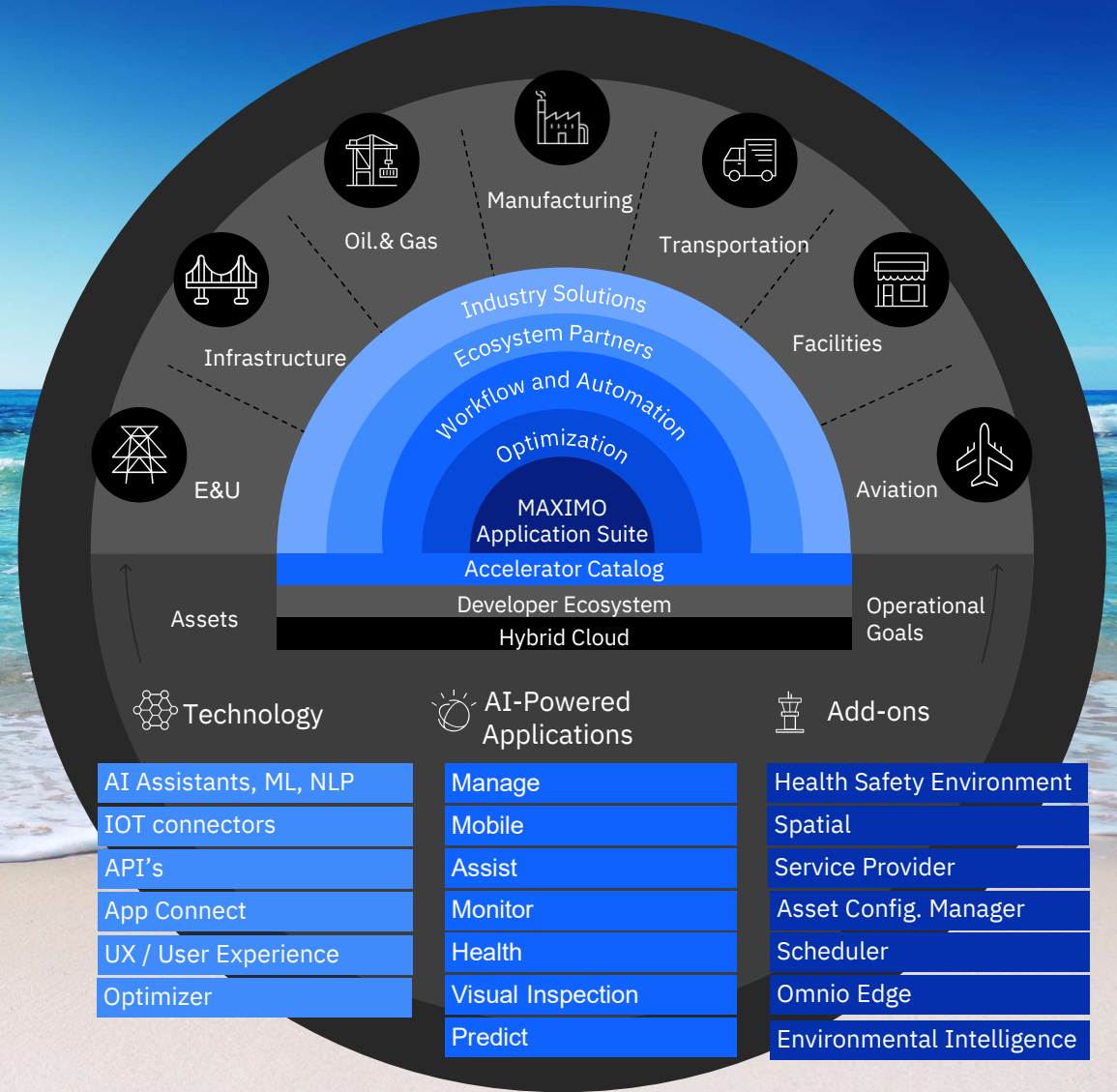
*Operations Optimization platform*

## Powered by AI-based Automation

The next generation of Operational Technology solutions requires bringing *new intelligence* that did not previously exist.

Enhancing physical assets operations with rich digital insights helps companies *transform* their businesses.

Technology must be intuitive and *easy to use* without lengthy manuals and training.







**USER GROUPS AND CERTIFICATE WORKSHOPS AUGUST 7 • AUGUST 7-10, 2023 • PHOENIX, ARIZONA**



**sandvikgroup**

IBM Consulting™  
 Deloitte.  
**ignitis**  
 grupė

**RELIABILITY 4.0**  
 DIGITAL TRANSFORMATION FOR  
 OPERATIONAL EXCELLENCE

CO-LOCATED WITH  
**TRIRIGA WORLD**

**GEMBA**  
**aiut**



**Shell**

**ELES**  
**TROIΔ**



**BPD ZENITH**



**Vetasi**  
 Solutions that work

**BEST USE OF  
 AUGMENTED REALITY  
 VIRTUAL REALITY  
 VISUAL SUPPORT**  
**Vetasi**



**Sund Belt**  
**EY**



**Cohesive**



INFORMACIJSKE STORITVE IN INŽENIRING, D.O.O.  
**INFORMATIKA**



# Maximo Exchange EMEA 2023

IBM Innovation Studio Munich & online  
October 10-11

#1

Maximo users

exchanging the most exciting projects to learn from each other and discuss ideas with peers, domain and IBM experts

IBM Sustainability Software/ © 2023 IBM Corporation

#2

Break the boundaries

Your peers might be in a similar industry, but different country. Exchange your challenges with industry leaders across EMEA.

#3

Not your usual event

This event is intended to be a user centric, fully co-created conference, not to a standard vendor-marketing event.

#4

Let's create!

- Topics
- Speakers
- The future



# The Future of Maximo - Next Chapter

—  
Boštjan Gabrijelčič  
Principal Asset Management Leader EMEA

